



# REFRIGERATED

## COLLECTION

 **DISPLAYS**  
**Cayuga**

# Table of Contents

## About Us

Bring Out Your Best	4
Our Team	5

## Grab & Go Mobile Island

Single-POD Bin (FGB3)	6
2-POD Bin (FGB4)	6

## Grab & Go

### MDM Series

Three-Level Upright 53"H Display (MD3M)	7
Four-Level Upright 63"H Display (MD4M)	7

### MRO Series

Single-Level 42"H Display (MRO-42)	8
Multi-Level 49"H Display (MRO-49)	8
Multi-Level 54"H Display (MRO-54)	8

### Multi-level Self-Service Remote Refrigeration

Five-level 76"H Display (SSL-76)	9
Six-level 82"H Display (SSL-82)	9

## Grab & Go Modular Island Remote Refrigeration

Four-level 60"H Display - Center (ISSL-60)	10
Four-level 60"H Display - End Cap (ISSL-60-E)	10

## Food Preparation

Front Self-Service & Rear Prep/Refrigeration Storage	11
--	----

## Bakery Full-Service

### Vertical Back

Double Curve Front Glass (BFSV-DC)	12
Square Front Glass (BFSV-SQ)	12

### High-Capacity Vertical Back

Double Curve Front Glass (BFSH-DC)	13
Square Front Glass (BFSH-SQ)	13

## Bakery Self-Service

### Vertical Back

Double Curve Front Glass (BSSV-DC)	14
Square Front Glass (BSSV-SQ)	14

High-Capacity Vertical Back	
Double Curve Front Glass (BSSH-DC)	15
Square Front Glass (BSSH-SQ)	15
Deli Full-Service	
Sloped Back	
Double Curve Front Glass (DFSS-DC)	16
Square Front Glass (DFSS-SQ)	16
Deli Self-Service	
Double Curve Front Glass (DSSV-DC)	17
Square Front Glass (DSSV-SQ)	17
High-Capacity Vertical Back	
Double Curve Front Glass (DSSH-DC)	18
Square Front Glass (DSSH-SQ)	18
Single Level Self-Service	
24" Front Height	
30" Rear Height (DSDN-30)	19
36" Rear Height (DSDN-36)	19
42" Rear Height (DSDN-42)	19
How to Order	20

# BRINGING OUT YOUR BEST

When you're looking to make the most of your store – and the experience you provide for your customers – look to Cayuga Displays!

With a strong drive to innovate for over 35 years, we offer the very best in retail display units, hot and cold cases and fixtures. We bring industry expertise and strategic thinking that results in a highly functional store: improved traffic flow, more product being noticed, better customer experience and increased sales!

You'll appreciate a seamless, efficient experience with Cayuga Displays. We ensure your success by taking the time from the start to fully understand your needs, your store and your brand. We deliver display products and recommendations that work.





OUR

# TEAM

We're focused on the performance of your store. We start the whole process with an exploration of your unique retail space and the brand image you want to deliver.

We focus on finding out about your needs, customer base and goals. We can then offer strategic, cost-effective recommendations to bring your brand to life – and ensure you get the ROI you're looking for.

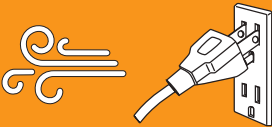
We've made it our business to understand the retail food customer – their traffic flow habits, shopping behaviors, trends, design preferences and product demands. Our displays and fixtures are designed and manufactured to address your customer and your business. From the specialized needs of bakery, deli, floral and produce departments to the myriad display needs throughout your entire store, we have the products and expertise in every food category.

Our manufacturing facility has grown significantly over the last 35 years, driven to be highly responsive in an ever-changing marketplace while always maintaining our reputation for top-level product craftsmanship!



# GRAB & GO MOBILE ISLAND

FRESH GO BIN



FGB3-0132-S



FGB3-0232-S



[FreshGoBin - Single POD](#)



[FreshGoBin - 2-POD](#)

## STANDARD FEATURES:

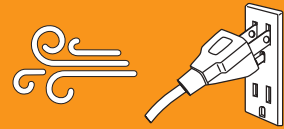
- Critical temperature (36°- 38°F) and Berry temperature (45° - 50°F).
- 9" H merchandising zone.
- Designed to plug into a 115V dedicated circuit.
- All venting underneath (no ugly side vents).
- Metal construction with clip-on panels.
- Matching dry bins available.
- Optional cross merchandising shelf available.
- Hot gas condensate evaporation system.
- ETL safety and sanitation certified.
- Meets UL, CSA, and NSF standards.

MODEL	LENGTH	WIDTH	HEIGHT	VOLTS	AMPS	PLUG
<b>FGB3-0132-S</b> (Single POD)	36"	36"	41 3/8"	115	10	NEMA 5-15P
<b>FGB3-0232-S</b> (Two POD)		72"			13.8	NEMA 5-20P



# GRAB & GO

MDM SERIES 53/63"H



MD3M



MD4M



MD3M



MD4M

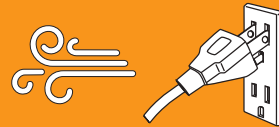
## STANDARD FEATURES:

- Many exterior finishes available: powdercoat paint, brushed stainless steel and laminate finishes.
- 3 interior finish options: textured powdercoat black, white and brushed stainless steel.
- 1-14" and 1-16" adjustable metal shelves with integrated LED lighting (MD3M).
- 1-12", 1-14" and 1-16" adjustable metal shelves with integrated LED lighting (MD4M).
- ETL safety and sanitation certified.
- Meets UL, CSA, and NSF standards.

MODEL	LENGTH	WIDTH	HEIGHT	VOLTS	AMPS	PLUG	MODEL	LENGTH	WIDTH	HEIGHT	VOLTS	AMPS	PLUG		
MD3M-24-53	26"	36 7⁄8"	52 ¾"	115	11.7	NEMA 5-15P	MD4M-24-63	26"	36 7⁄8"	62 ½"	115	11.7	NEMA 5-15P		
MD3M-38-53	40 ¼"						MD4M-38-63	40 ¼"							
MD3M-48-53	49 ⅞"						MD4M-48-63	49 ⅞"							
MD3M-57-53	59 ⅜"			115/230	8.7	NEMA L14-20P	MD4M-57-63	59 ⅜"			115/230	8.7	NEMA L14-20P		
MD3M-76-53	78 ½"				12.4		MD4M-76-63	78 ½"				12.4			
MD3M-96-53	97 ⅝"						MD4M-96-63	97 ⅝"							

# GRAB & GO

MRO SERIES 42/49/54"H



MRO-42



MRO-49



MRO-54



MRO-42



MRO-49



MRO-54

## STANDARD FEATURES:

- Many exterior finishes available: powdercoat paint, brushed stainless steel and laminate finishes.
- 3 interior finish options: textured powdercoat black, white and brushed stainless steel.
- 1-12" adjustable metal shelves with integrated LED lighting (MRO-49).
- 1-12" & 1-18" adjustable metal shelves with integrated LED lighting (MRO-54).
- Meets UL, CSA, & NSF standards.

MODEL	LENGTH	WIDTH	HEIGHT	VOLTS	AMPS	PLUG	MODEL	LENGTH	WIDTH	HEIGHT	VOLTS	AMPS	PLUG
MRO-24-42	26 ¼"	36 ⅛"	42 ⅛"	115	11.8	NEMA 5-15P	MRO-24-49	26 ¼"	36 ⅛"	49 ⅛"	115	11.8	NEMA 5-15P
MRO-38-42	40 ¼"				11.9		MRO-38-49	40 ¼"				11.9	
MRO-48-42	49 ⅞"				12.0		MRO-48-49	49 ⅞"				12.0	
MRO-57-42	59 ⅜"			115/230	9.3	NEMA L14-20P	MRO-57-49	59 ⅜"			115/230	9.3	NEMA L14-20P
MRO-76-42	78 ½"				12.1		MRO-76-49	78 ½"				12.1	
MRO-96-42	97 ⅝"				12.5		MRO-96-49	97 ⅝"				12.5	

MODEL	LENGTH	WIDTH	HEIGHT	VOLTS	AMPS	PLUG
MRO-24-54	26 ¼"	36 ⅛"	54 ⅛"	115	11.8	NEMA 5-15P
MRO-38-54	40 ¼"				11.9	
MRO-48-54	49 ⅞"				12.0	
MRO-57-54	59 ⅜"			115/230	9.8	NEMA L14-20P
MRO-76-54	78 ½"				12.6	
MRO-96-54	97 ⅝"				13.0	





SSL-76



SSL-82



SSL-76



SSL-82

### STANDARD FEATURES:

- Medium display depth 35 1/8". Small display depth 30 1/2" available.
- Many exterior finishes available: powdercoat paint, brushed stainless steel and laminate finishes.
- 3 interior finish options: textured powdercoat black, white and brushed stainless steel.
- 4-16" adjustable metal shelves with integrated LED lighting (SSL-76).
- 5-16" adjustable metal shelves with integrated LED lighting (SSL-82).
- ETL safety and sanitation certified.
- Meets UL, CSA, and NSF standards.
- CO<sub>2</sub> option available.

MODEL	LENGTH	WIDTH	HEIGHT	VOLTS	AMPS	PLUG	BUTH	SUCTION
SSL-3876-M	36 1/4"	35 1/8"	75 7/8"	115	1.4	NEMA 5-15P	4870	20F
SSL-4876-M	48 1/4"						5975	
SSL-6076-M	60 3/8"						7170	
SSL-7276-M	72 1/2"						9560	
SSL-9676-M	96 1/2"						11950	

MODEL	LENGTH	WIDTH	HEIGHT	VOLTS	AMPS	PLUG	BUTH	SUCTION
SSL-3882-M	36 1/4"	35 1/8"	81 7/8"	115	1.4	NEMA 5-15P	4870	20F
SSL-4882-M	48 1/4"						5975	
SSL-6082-M	60 3/8"						7170	
SSL-7282-M	72 1/2"						9560	
SSL-9682-M	96 1/2"						11950	

# GRAB & GO MODULAR ISLAND

MULTI-LEVEL SELF-SERVICE DISPLAY 60"H



[ISSL-xx60](#)



[ISSL-xx60-E](#)

## STANDARD FEATURES:

- Medium display depth 34 3/4". Small display depth available.
- Remote refrigeration option only for this display profile.
- Many exterior finishes available: powdercoat paint, brushed stainless steel and laminate finishes.
- 3 interior finish options: textured powdercoat black, white and brushed stainless steel.
- 1-12", 1-14" and 1-16" adjustable metal shelves with integrated LED lighting.
- Meets UL, CSA, & NSF standards.
- CO<sub>2</sub> option available.

MODEL	LENGTH	WIDTH	HEIGHT	VOLTS	AMPS	PLUG	BUTH	SUCTION
ISSL-3660-MR	36 1/4"	34 3/4"	60 1/8"	115	1.4	NEMA 5-15P	3800	20F
ISSL-4860-MR	48 1/4"						4500	
ISSL-6060-MR	60 3/8"						5225	
ISSL-7260-MR	72 1/2"				1.9		6855	
ISSL-9660-MR	96 1/2"				2.1		8440	

Note:  
Length does not  
include end panels.  
Add 1" per panel

MODEL	LENGTH	WIDTH	HEIGHT	VOLTS	AMPS	PLUG	BUTH	SUCTION
ISSL-6060-E-MR	74 1/8"	34 3/4"	60 1/8"	115	1.4	NEMA 5-15P	6855	20F



# FOOD PREPARATION

## MULTI-LEVEL SELF-SERVICE DISPLAY



[DOUW](#)

### STANDARD FEATURES:

- Many exterior finishes available: powdercoat paint, brushed stainless steel and laminate finishes.
- 3 interior finish options: textured powdercoat black, white and brushed stainless steel.
- 1-12" adjustable metal shelves with integrated LED lighting.
- Rear storage: constructed of brushed stainless w/ thermal sliding doors. Preparation area: refrigerated wells for ¼ stainless steel food pans. Prep counter is brushed stainless w/removeable white nylon cutting board.
- The preparation area is protected by a 14"H front mounted tempered glass sneeze guard, 12"D top shelf and end panels.
- The refrigerated well has a separate drain line with a shut-off used for cleaning purposes.
- The system has two temperature controllers, one to control the front and top display, the other for the rear storage cabinet.
- Condensate water is removed by an electrical evaporator.
- ETL safety and sanitation certified.
- Meets UL, CSA, and NSF standards.
- CO<sub>2</sub> option available.

MODEL	LENGTH	WIDTH	HEIGHT	VOLTS	AMPS	PLUG	BUTH	SUCTION
DOUW-4838-MR	48 ¼"	54 ½"	54 ½"	115	1.4	NEMA 5-15P	3970	20F
DOUW-6038-MR	60 ¾"				1.6		4760	
DOUW-7238-MR	72 ½"				2.1		6350	
DOUW-9638-MR	96 ½"				2.3		7935	

Note:  
Length does not  
include end panels.  
Add 1" per panel



# BAKERY FULL-SERVICE DISPLAY

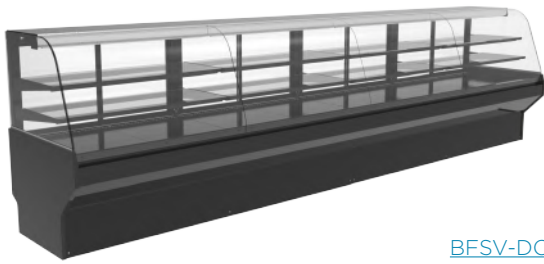
DOUBLE CURVE/SQUARE GLASS DISPLAY 52"H



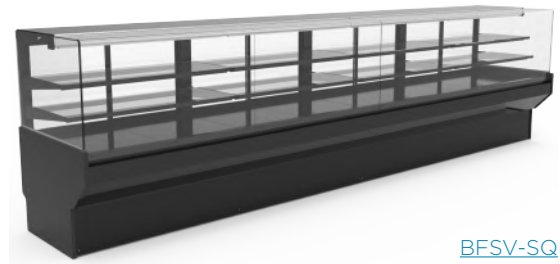
BFSV-DC



BFSV-SQ



[BFSV-DC](#)



[BFSV-SQ](#)

## STANDARD FEATURES:

- Medium display depth 35 5/8".
- Three interior finish options, textured powdercoat black, white or brushed stainless steel.
- Black or white painted front exterior metal décor pan with a 4" vertical flat panel.
- LED light strips are mounted on the top ledge of the display area and under each shelf level.
- 2-19" adjustable tempered glass shelves.
- Hydraulic lift-up front glass hardware.
- Double curve or Square front glass.
- CO<sub>2</sub> option available.

MODEL	LENGTH	WIDTH	HEIGHT	VOLTS	AMPS	PLUG	BUTH	SUCTION
BFSV-38DC-M	38 1/4"	35 5/8"	51 1/2"	115	1.9	NEMA 5-15P	2440	25F
BFSV-48DC-M	47 7/8"				2.1		2920	
BFSV-57DC-M	57 3/8"				2.8		3370	
BFSV-76DC-M	76 1/2"				3.4		4320	
BFSV-96DC-M	95 5/8"				3.9		5320	

Note:  
Length does not  
include end panels.  
Add 1" per panel

MODEL	LENGTH	WIDTH	HEIGHT	VOLTS	AMPS	PLUG	BUTH	SUCTION
BFSV-38SQ-M	38 1/4"	35 5/8"	51 1/2"	115	1.9	NEMA 5-15P	2440	25F
BFSV-48SQ-M	47 7/8"				2.1		2920	
BFSV-57SQ-M	57 3/8"				2.8		3370	
BFSV-76SQ-M	76 1/2"				3.4		4320	
BFSV-96SQ-M	95 5/8"				3.9		5320	

Note:  
Length does not  
include end panels.  
Add 1" per panel

# BAKERY FULL-SERVICE DISPLAY

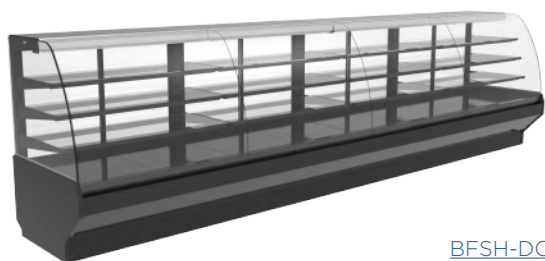
DOUBLE CURVE/SQUARE GLASS HIGH-CAPACITY DISPLAY 52"H



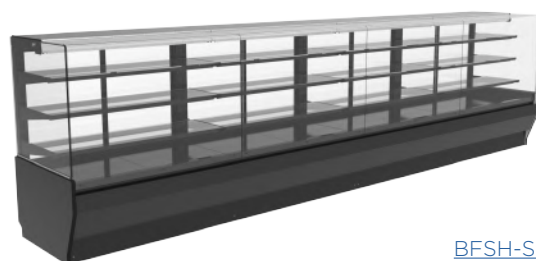
BFSH-DC



BFSH-SQ



[BFSH-DC](#)



[BFSH-SQ](#)

## STANDARD FEATURES:

- Medium display depth 35 5/8".
- Three interior finish options, textured powdercoat black, white or brushed stainless steel.
- Black or white painted front exterior metal décor pan with a 4" vertical flat panel.
- LED light strips are mounted on the top ledge of the display area and under each shelf level.
- 1-17" and 2-19" adjustable tempered glass shelves.
- Hydraulic lift-up front glass hardware.
- Double curve or Square front glass.
- CO<sub>2</sub> option available.

MODEL	LENGTH	WIDTH	HEIGHT	VOLTS	AMPS	PLUG	BUTH	SUCTION
BFSH-38DC-M	38 1/4"	35 5/8"	51 1/2"	115	1.9	NEMA 5-15P	2440	25F
BFSH-48DC-M	47 7/8"				2.1		2920	
BFSH-57DC-M	57 3/8"				2.8		3370	
BFSH-76DC-M	76 1/2"				3.4		4320	
BFSH-96DC-M	95 5/8"				3.9		5320	

Note:  
Length does not  
include end panels.  
Add 1" per panel

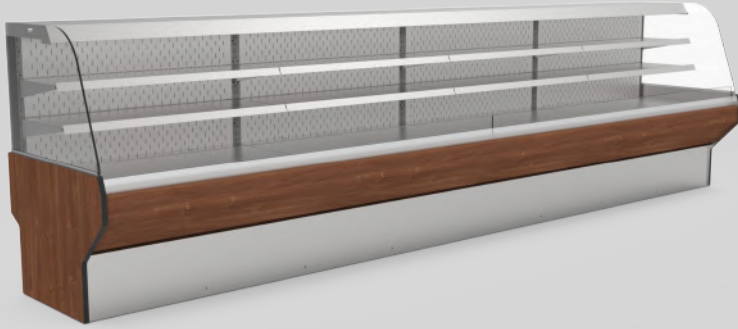
MODEL	LENGTH	WIDTH	HEIGHT	VOLTS	AMPS	PLUG	BUTH	SUCTION
BFSH-38SQ-M	38 1/4"	35 5/8"	51 1/2"	115	1.9	NEMA 5-15P	2440	25F
BFSH-48SQ-M	47 7/8"				2.1		2920	
BFSH-57SQ-M	57 3/8"				2.8		3370	
BFSH-76SQ-M	76 1/2"				3.4		4320	
BFSH-96SQ-M	95 5/8"				3.9		5320	

Note:  
Length does not  
include end panels.  
Add 1" per panel



# BAKERY SELF-SERVICE DISPLAY

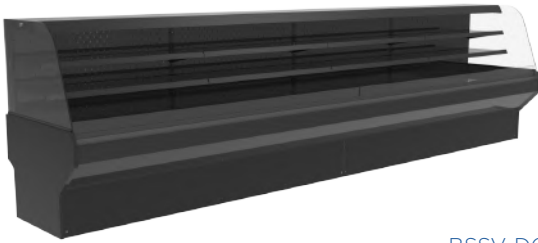
MATCHES DOUBLE CURVE/SQUARE GLASS DISPLAY 52"H



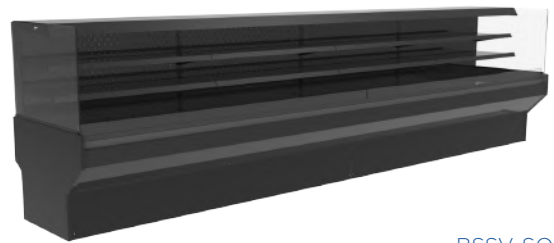
BSSV-DC



BSSV-SQ



[BSSV-DC](#)



[BSSV-SQ](#)

## STANDARD FEATURES:

- Medium display depth 36 1/4".
- Three interior finish options, textured powdercoat black, white or brushed stainless steel.
- Black or white painted front exterior metal décor pan with a 4" vertical flat panel.
- LED light strips are mounted on the top ledge of the display area and under each shelf level.
- 1-14" and 1-16" adjustable metal shelves with integrated front product stop.
- Top mounted roll-down night curtain.
- Double curve or Square glass profile.
- CO<sub>2</sub> option available.

MODEL	LENGTH	WIDTH	HEIGHT	VOLTS	AMPS	PLUG	BUTH	SUCTION
BSSV-38DC-M	38 1/4"	36 1/4"	51 1/2"	115	1.6	NEMA 5-15P	3575	20F
BSSV-48DC-M	47 7/8"				1.8		4340	
BSSV-57DC-M	57 3/8"				2.5		5055	
BSSV-76DC-M	76 1/2"				2.8		6630	
BSSV-96DC-M	95 5/8"				3.3		8160	

Note:  
Length does not  
include end panels.  
Add 1" per panel

MODEL	LENGTH	WIDTH	HEIGHT	VOLTS	AMPS	PLUG	BUTH	SUCTION
BSSV-38SQ-M	38 1/4"	36 1/4"	51 1/2"	115	1.6	NEMA 5-15P	3575	20F
BSSV-48SQ-M	47 7/8"				1.8		4340	
BSSV-57SQ-M	57 3/8"				2.5		5055	
BSSV-76SQ-M	76 1/2"				2.8		6630	
BSSV-96SQ-M	95 5/8"				3.3		8160	

Note:  
Length does not  
include end panels.  
Add 1" per panel



# BAKERY SELF-SERVICE DISPLAY

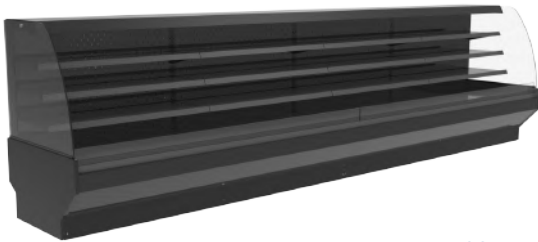
DOUBLE CURVE/SQUARE GLASS HIGH-CAPACITY DISPLAY 52"H



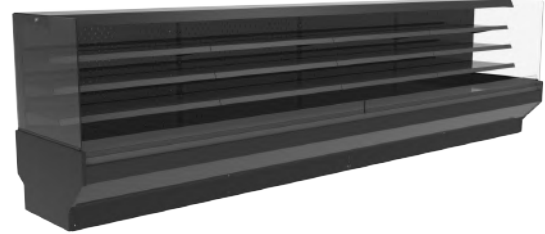
BSSH-DC



BSSH-SQ



[BSSH-DC](#)



[BSSH-SQ](#)

## STANDARD FEATURES:

- Medium display depth 36 1/4".
- Three interior finish options, textured powdercoat black, white or brushed stainless steel.
- Black or white painted front exterior metal décor pan with a 4" vertical flat panel.
- LED light strips are mounted on the top ledge of the display area and under each shelf level.
- 1-12", 1-14" & 1-16" adjustable metal shelves shelves with integrated front product stop (BSSH-DC).
- 1-14" & 2-16" adjustable metal shelves shelves with integrated front product stop (BSSH-SQ).
- Double curve or Square glass profile.
- CO<sub>2</sub> option available.

MODEL	LENGTH	WIDTH	HEIGHT	VOLTS	AMPS	PLUG	BUTH	SUCTION
BSSH-38DC-M	38 1/4"	36 1/4"	51 1/2"	115	1.6	NEMA 5-15P	3575	20F
BSSH-48DC-M	47 7/8"				1.8		4340	
BSSH-57DC-M	57 3/8"				2.5		5055	
BSSH-76DC-M	76 1/2"				2.8		6630	
BSSH-96DC-M	95 5/8"				3.3		8160	

Note:  
Length does not  
include end panels.  
Add 1" per panel

MODEL	LENGTH	WIDTH	HEIGHT	VOLTS	AMPS	PLUG	BUTH	SUCTION
BSSH-38SQ-M	38 1/4"	36 1/4"	51 1/2"	115	1.6	NEMA 5-15P	3575	20F
BSSH-48SQ-M	47 7/8"				1.8		4340	
BSSH-57SQ-M	57 3/8"				2.5		5055	
BSSH-76SQ-M	76 1/2"				2.8		6630	
BSSH-96SQ-M	95 5/8"				3.3		8160	

Note:  
Length does not  
include end panels.  
Add 1" per panel

# DELI FULL-SERVICE DISPLAY

DOUBLE CURVE/SQUARE GLASS DISPLAY 52"H



DFSS-DC



DFSS-SQ



[DFSS-DC](#)



[DFSS-S](#)

## STANDARD FEATURES:

- Medium display depth 35 5/8". Large display depth 43 3/4" available.
- Three interior finish options, textured powdercoat black, white or brushed stainless steel.
- Black or white painted front exterior metal décor pan with a 4" vertical flat panel.
- LED light strips are mounted on the top ledge of the display area and under each shelf level.
- 1-14" & 1-19" adjustable tempered glass shelves.
- Hydraulic lift-up front glass hardware.
- Double curve or Square front glass.
- CO<sub>2</sub> option available.

MODEL	LENGTH	WIDTH	HEIGHT	VOLTS	AMPS	PLUG	BUTH	SUCTION
DFSS-38DC-M	38 1/4"	35 5/8"	51 1/2"	115	1.9	NEMA 5-15P	2440	25F
DFSS-48DC-M	47 7/8"				2.1		2920	
DFSS-57DC-M	57 3/8"				2.8		3370	
DFSS-76DC-M	76 1/2"				3.4		4320	
BFSV-96DC-M	95 5/8"				3.9		5320	

Note:  
Length does not  
include end panels.  
Add 1" per panel

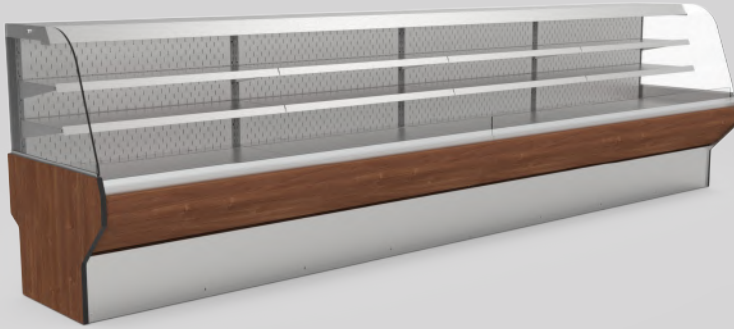
MODEL	LENGTH	WIDTH	HEIGHT	VOLTS	AMPS	PLUG	BUTH	SUCTION
DFSS-38SQ-M	38 1/4"	35 5/8"	51 1/2"	115	1.9	NEMA 5-15P	2440	25F
DFSS-48SQ-M	47 7/8"				2.1		2920	
DFSS-57SQ-M	57 3/8"				2.8		3370	
DFSS-76SQ-M	76 1/2"				3.4		4320	
DFSS-96SQ-M	95 5/8"				3.9		5320	

Note:  
Length does not  
include end panels.  
Add 1" per panel



# DELI SELF-SERVICE DISPLAY

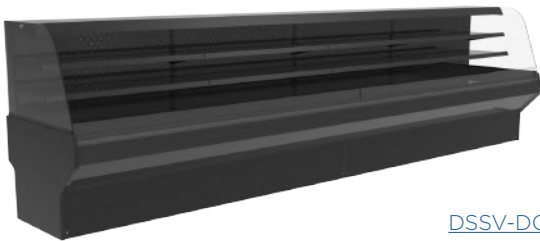
MATCHES DOUBLE CURVE/SQUARE GLASS DISPLAY 52"H



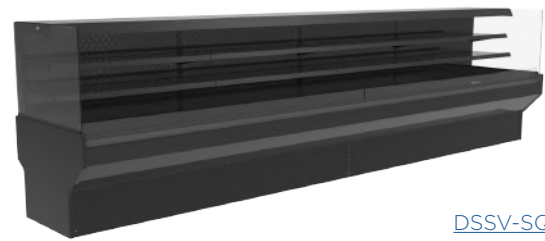
DSSV-DC



DSSV-SQ



[DSSV-DC](#)



[DSSV-SQ](#)

## STANDARD FEATURES:

- Medium display depth 36 1/4".
- Three interior finish options, textured powdercoat black, white or brushed stainless steel.
- Black or white painted front exterior metal décor pan with a 4" vertical flat panel.
- LED light strips are mounted on the top ledge of the display area and under each shelf level.
- 1-14" & 1-16" adjustable metal shelves with integrated front product stop.
- Top mounted roll-down night curtain.
- Double curve or Square glass profile.
- CO<sub>2</sub> option available.

MODEL	LENGTH	WIDTH	HEIGHT	VOLTS	AMPS	PLUG	BUTH	SUCTION
DSSV-38DC-M	38 1/4"	36 1/4"	51 1/2"	115	1.6	NEMA 5-15P	3575	20F
DSSV-48DC-M	47 7/8"				1.8		4340	
DSSV-57DC-M	57 3/8"				2.5		5055	
DSSV-76DC-M	76 1/2"				2.8		6630	
DSSV-96DC-M	95 5/8"				3.3		8160	

Note:  
Length does not  
include end panels.  
Add 1" per panel

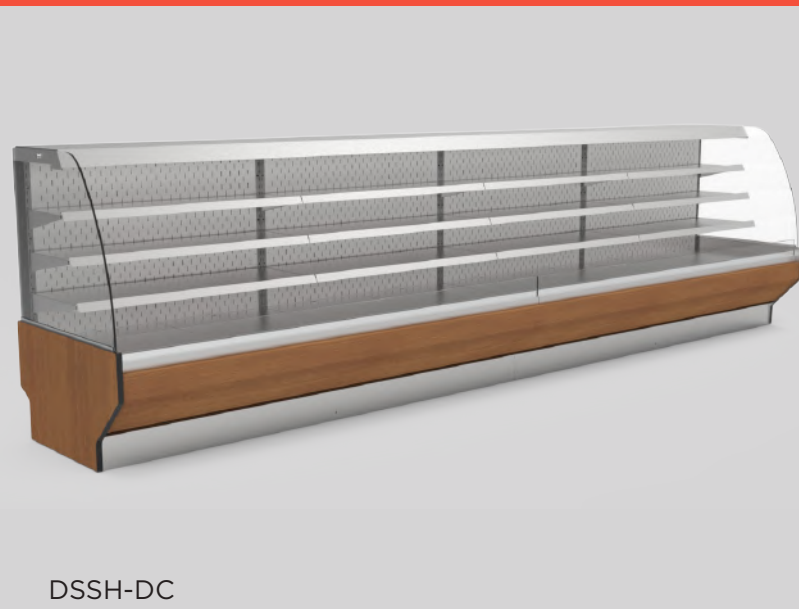
MODEL	LENGTH	WIDTH	HEIGHT	VOLTS	AMPS	PLUG	BUTH	SUCTION
DSSV-38SQ-M	38 1/4"	36 1/4"	51 1/2"	115	1.6	NEMA 5-15P	3575	20F
DSSV-48SQ-M	47 7/8"				1.8		4340	
DSSV-57SQ-M	57 3/8"				2.5		5055	
DSSV-76SQ-M	76 1/2"				2.8		6630	
DSSV-96SQ-M	95 5/8"				3.3		8160	

Note:  
Length does not  
include end panels.  
Add 1" per panel



# DELI SELF-SERVICE DISPLAY

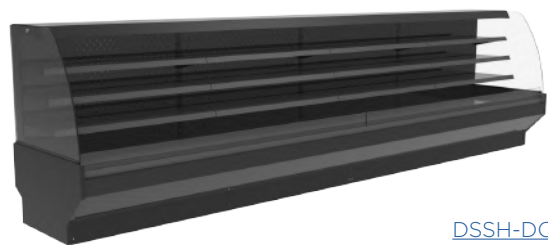
DOUBLE CURVE/SQUARE GLASS HIGH-CAPACITY DISPLAY 52"H



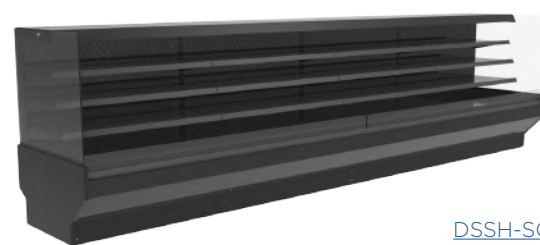
DSSH-DC



DSSH-SQ



[DSSH-DC](#)



[DSSH-SQ](#)

## STANDARD FEATURES:

- Medium display depth 36 1/4".
- Three interior finish options, textured powdercoat black, white or brushed stainless steel.
- Black or white painted front exterior metal décor pan with a 4" vertical flat panel.
- LED light strips are mounted on the top ledge of the display area and under each shelf level.
- 1-12", 1-14" & 1-16" adjustable metal shelves shelves with integrated front product stop (BSSH-DC).
- 1-14" & 2-16" adjustable metal shelves shelves with integrated front product stop (BSSH-SQ).
- Double curve or Square glass profile.
- CO<sub>2</sub> option available.

MODEL	LENGTH	WIDTH	HEIGHT	VOLTS	AMPS	PLUG	BUTH	SUCTION
DSSH-38DC-M	38 1/4"	36 1/4"	51 1/2"	115	1.6	NEMA 5-15P	3575	20F
DSSH-48DC-M	47 7/8"				1.8		4340	
DSSH-57DC-M	57 3/8"				2.5		5055	
DSSH-76DC-M	76 1/2"				2.8		6630	
DSSH-96DC-M	95 5/8"				3.3		8160	

Note:  
Length does not  
include end panels.  
Add 1" per panel

MODEL	LENGTH	WIDTH	HEIGHT	VOLTS	AMPS	PLUG	BUTH	SUCTION
DSSH-38SQ-M	38 1/4"	36 1/4"	51 1/2"	115	1.6	NEMA 5-15P	3575	20F
DSSH-48SQ-M	47 7/8"				1.8		4340	
DSSH-57SQ-M	57 3/8"				2.5		5055	
DSSH-76SQ-M	76 1/2"				2.8		6630	
DSSH-96SQ-M	95 5/8"				3.3		8160	

Note:  
Length does not  
include end panels.  
Add 1" per panel

# SINGLE LEVEL SELF-SERVICE

MULTI-LEVEL SELF-SERVICE DISPLAY



DSDN-36



DSDN-42 /DSDN-48



[DSDN-36](#)



[DSDN-42 / DSDN-48](#)

## STANDARD FEATURES:

- Medium display depth 35 5/8". CO<sub>2</sub> option available.
- Three interior finish options, textured powdercoat black, white or brushed stainless steel.
- Black or white painted front exterior metal décor pan with a 4" vertical flat panel.
- LED light strips are mounted on the top ledge of the display area.

MODEL	LENGTH	WIDTH	HEIGHT	VOLTS	AMPS	PLUG	BUTH	SUCTION
DSDN-3636-M	36 ¼"	35 ⅝"	35 ⅞"	115	0.7	NEMA 5-15P	2719	20F
DSDN-4836-M	48 ¼"						3619	
DSDN-6036-M	60 ⅜"				0.9		4528	
DSDN-7236-M	72 ½"						5438	
DSDN-9636-M	96 ½"				1.1		7238	

Note:  
Length does not  
include end panels.  
Add 1" per panel

MODEL	LENGTH	WIDTH	HEIGHT	VOLTS	AMPS	PLUG	BUTH	SUCTION
DSDN-3642-M	36 ¼"	35 ⅝"	41 ⅞"	115	1.2	NEMA 5-15P	2794	20F
DSDN-4842-M	48 ¼"						3719	
DSDN-6042-M	60 ⅜"				1.4		4654	
DSDN-7242-M	72 ½"						5589	
DSDN-9642-M	96 ½"				1.6		7439	

Note:  
Length does not  
include end panels.  
Add 1" per panel

MODEL	LENGTH	WIDTH	HEIGHT	VOLTS	AMPS	PLUG	BUTH	SUCTION
DSDN-3648-M	36 ¼"	35 ⅝"	47 ⅞"	115	1.2	NEMA 5-15P	2870	20F
DSDN-4848-M	48 ¼"						3820	
DSDN-6048-M	60 ⅜"				1.4		4780	
DSDN-7248-M	72 ½"						5740	
DSDN-9648-M	96 ½"				1.6		7640	

Note:  
Length does not  
include end panels.  
Add 1" per panel



# HOW TO ORDER

We'll help you select the right case for your requirements.  
The steps below will help us to serve you best.

- 1 Choose the showcase that meets your display requirements from the product specification sheets.
- 2 Review the options table found on the specification sheet and make your selections of the options provided.
- 3 Select from the large pallet of colours found on the last five pages of the brochure, or choose a stainless steel, standard black or white for the exterior finish of your showcase.
- 4 E-mail your request for a quote to your Cayuga sales representative or [sales@cayugadisplays.com](mailto:sales@cayugadisplays.com) and we will quickly respond to your request. Please include your full contact information in case we have any questions.

## Contact the inside sales team

### Cayuga Displays

E: [sales@cayugadisplays.com](mailto:sales@cayugadisplays.com)

T: 1-800-839-5536



**T:** 800.839.5536

**E:** [sales@cayugadisplays.com](mailto:sales@cayugadisplays.com)

**A:** 70 Talbot St E, PO Box 130  
Cayuga, ON N0A 1E0

