

MARKET BIN WITH BASE MERCHANDISING



Clear finish shown



Select Cherry finish w/
optional wire cage shown.
Other finishes available -
see chart.

| MODEL | DESCRIPTION | LENGTH | DEPTH | HEIGHT |
|--------------|-------------------|---------|---------|---------|
| TBOR-062-01B | Market Bin | 35 3/4" | 35 3/4" | 31 1/4" |
| TBOR-063-01B | Market Bin - Tall | 35 3/4" | 35 3/4" | 35 1/4" |

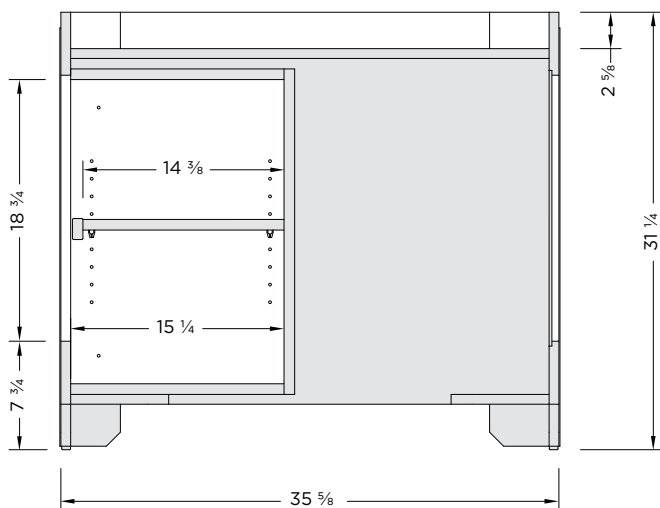
FEATURES:

- Birch/maple plywood, solid maple, melamine and MDF construction
- Nylon tack glides
- Corner guards

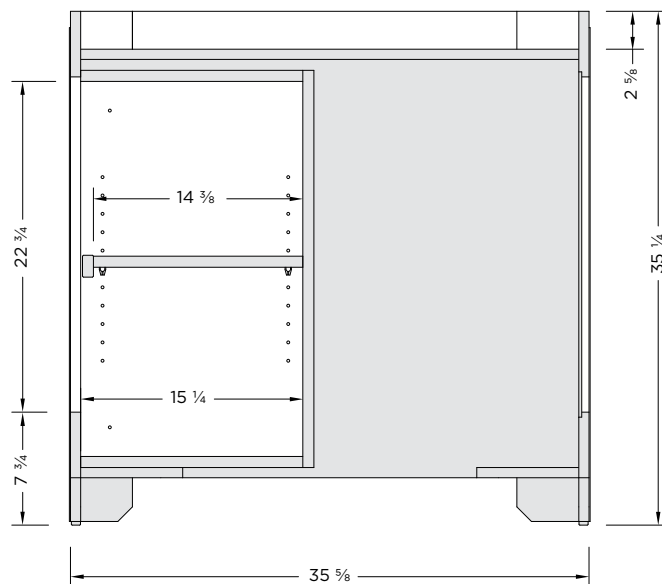
OPTIONS:

- ABS haircell liner
- Wire cage
- Heavy duty casters (2 locking)
- 1 1/2" ABS bumper
- Refer to Wood Stains Finishes

Note: Information and specifications may change due to engineering improvements.



TBOR-062-01B



TBOR-063-01B