

MARKET BIN

8' 11 ¼"L Market Bin w/ Base Merchandising shown:

TBOR-066-01C (Market Bin w/ ABS Tray)
 TBOR-067-01C (Market Bin w/ABS Tray)
 TBOR-067-01C (Market Bin w/ABS Tray)
 TBOR-066-01C (Market Bin w/ ABS Tray)
 TBOR-078-01C (Wing Table w/ABS Tray)



Finish: Weathered Wood

5' 11 ½"L Market Bin shown:

TBOR-061-01C (Market Bin)
 TBOR-061-01C (Market Bin)
 TBOR-078-01B (Wing Table)



Finish: Natural Maple

Finish: Select Cherry



8' 11 ¼"L Market Bin shown:

TBOR-062-01C (Market Bin w/ABS Liner)
 TBOR-079-01B (Wing Table w/ABS Liner)
 TBOR-079-01B (Wing Table w/ABS Liner)
 TBOR-063-01C (Market Bin w/ABS Liner)
 TBOR-063-01C (Market Bin w/ABS Liner)
 TBOR-079-01B (Wing Table w/ABS Liner)
 TBOR-079-01B (Wing Table w/ABS Liner)

Applications

- The market bin collection can be stand-alone, line-up or island configurations

MARKET ICE BIN



Clear finish shown



Iron Mountain finish shown. Other finishes available - see chart.

MODEL	DESCRIPTION	LENGTH	DEPTH	HEIGHT
TBOR-064-01C	Market Ice Bin with ABS Tray	35 3/4"	35 3/4"	31 7/8"
TBOR-065-01C	Market Ice Bin with ABS Tray - Tall	35 3/4"	35 3/4"	35 7/8"

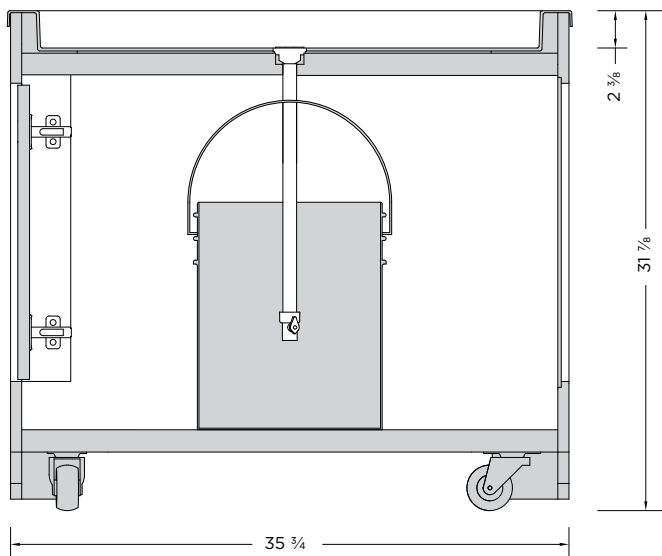
FEATURES:

- Birch/maple plywood and MDF construction
- Heavy duty casters (2 locking)
- Corner guards
- ABS tray with insulation, drain, valve, hose, 5 gallon bucket & access door

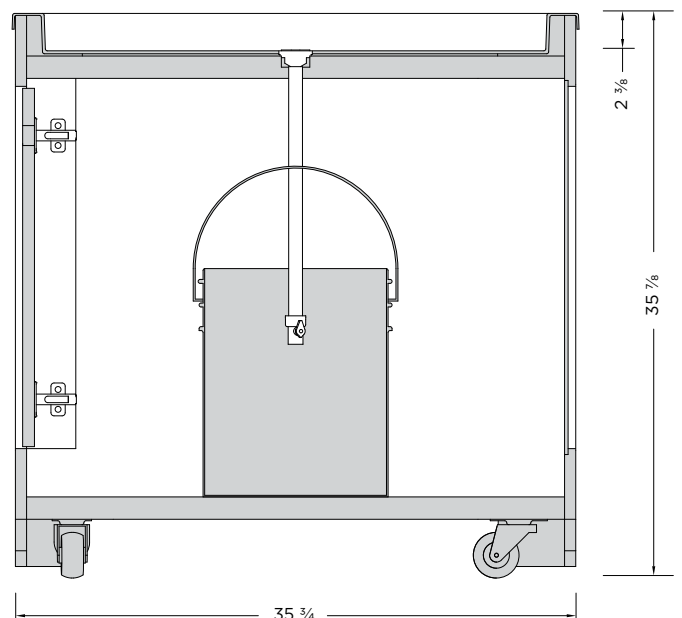
OPTIONS:

- 1 1/2" ABS bumper
- Refer to Wood Stains Finishes

Note: Information and specifications may change due to engineering improvements.



TBOR-064-01C



TBOR-065-01C

MARKET BIN



Clear finish shown



Oiled Cherry finish w/optional ABS Tray shown.



Weathered Wood finish w/optional Wire Cage & ABS Liner shown. Other finishes available - see chart.

MODEL	DESCRIPTION	LENGTH	DEPTH	HEIGHT
TBOR-060-01C	Market Bin	35 ¾"	35 ¾"	31 ¾"
TBOR-061-01C	Market Bin - Tall	35 ¾"	35 ¾"	35 ¾"

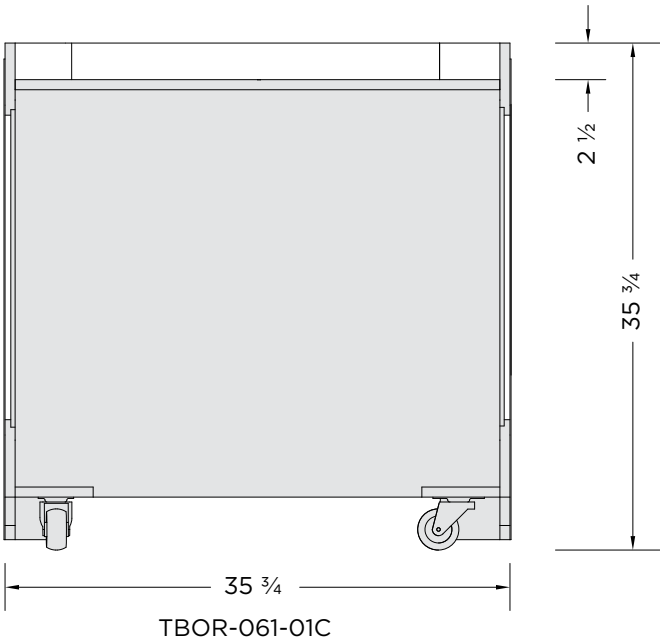
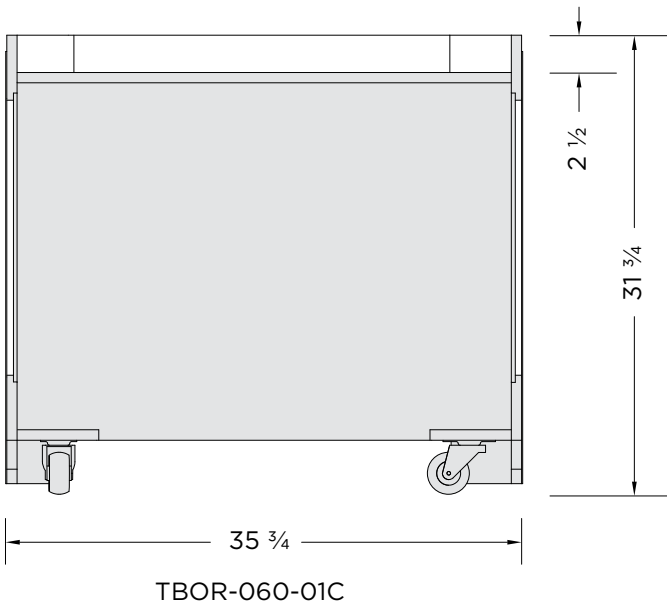
FEATURES:

- Birch/maple plywood and MDF construction
- Heavy duty casters (2 locking)
- Corner guards

OPTIONS:

- ABS haircell liner
- ABS tray (no drain)
- Wire cage
- 1 ½" ABS bumper
- Refer to Wood Stains Finishes

Note: Information and specifications may change due to engineering improvements.



MARKET ICE BIN WITH BASE MERCHANDISING



Clear finish shown



Choco Cherry finish shown, Other finishes available - see chart.

MODEL	DESCRIPTION	LENGTH	DEPTH	HEIGHT
TBOR-066-01C	Market Ice Bin with ABS Tray	35 3/4"	35 3/4"	31 7/8"
TBOR-067-01C	Market Ice Bin with ABS Tray - Tall	35 3/4"	35 3/4"	35 7/8"

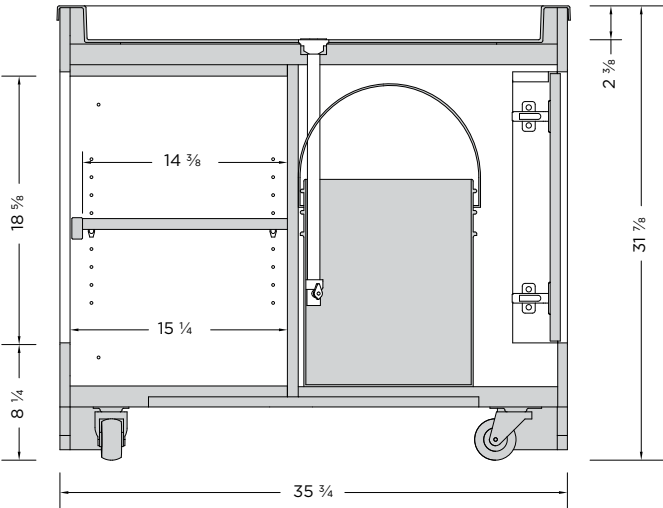
FEATURES:

- Birch/maple plywood, solid maple, melamine and MDF construction
- Heavy duty casters (2 locking)
- Corner guards
- ABS tray with insulation, drain, valve, hose, 5 gallon bucket & access door

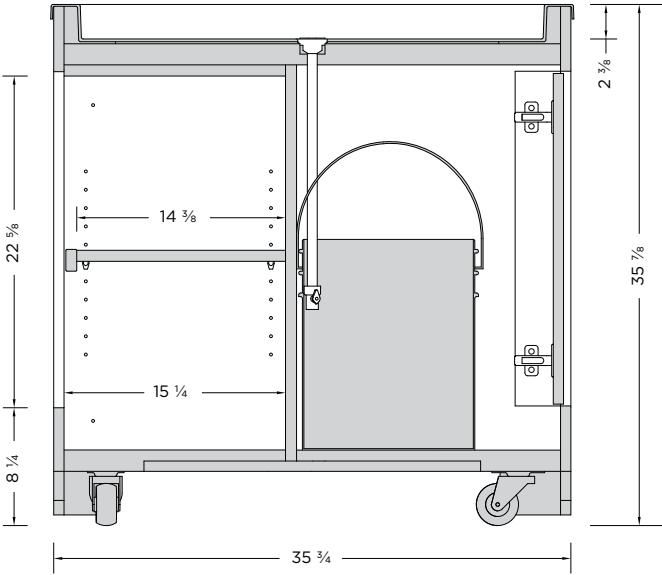
OPTIONS:

- 1 1/2" ABS bumper
- Refer to Wood Stains Finishes

Note: Information and specifications may change due to engineering improvements.



TBOR-066-01C



TBOR-067-01C

MARKET BIN WITH BASE MERCHANDISING



MODEL	DESCRIPTION	LENGTH	DEPTH	HEIGHT
TBOR-062-01C	Market Bin	35 3/4"	35 3/4"	31 3/4"
TBOR-063-01C	Market Bin - Tall	35 3/4"	35 3/4"	35 3/4"

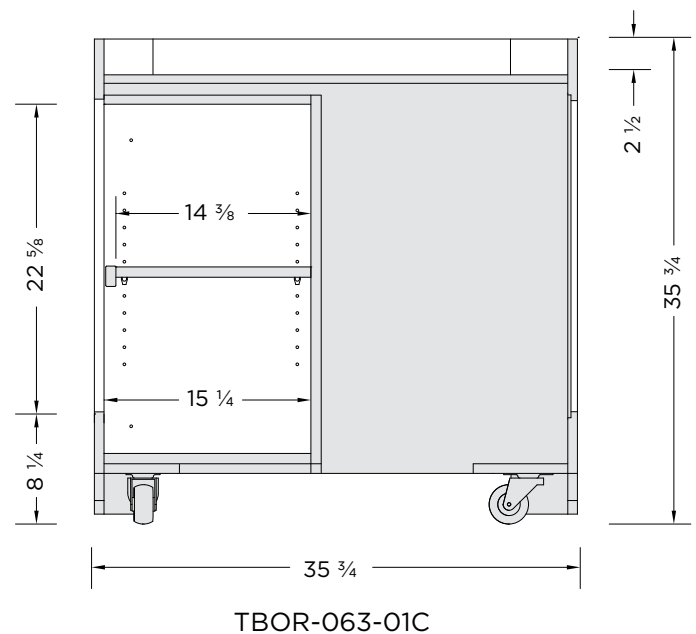
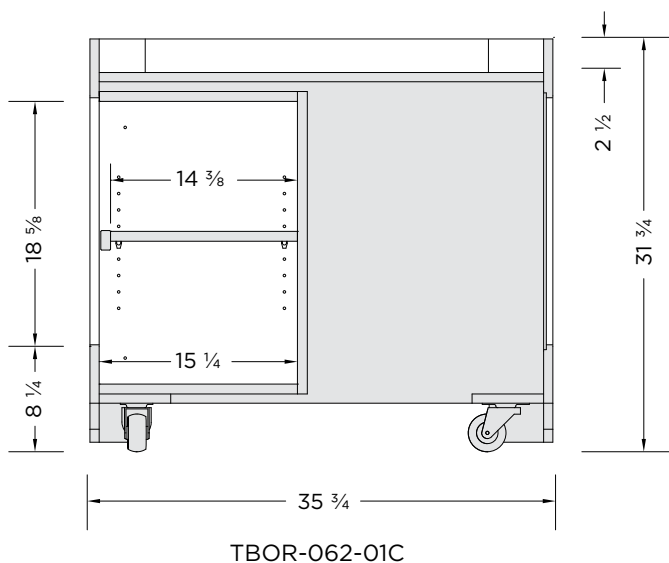
FEATURES:

- Birch/maple plywood, solid maple, melamine and MDF construction
- Heavy duty casters (2 locking)
- Corner guards

OPTIONS:

- ABS haircell liner
- ABS tray (no drain)
- Wire cage
- 1 1/2" ABS bumper
- Refer to Wood Stains Finishes

Note: Information and specifications may change due to engineering improvements.



WING TABLES - 3 OPEN SIDES



Clear finish shown



Weathered Wood finish w/optional ABS Tray shown. Other finishes available - see chart.

MODEL	DESCRIPTION	LENGTH	DEPTH	HEIGHT
TBOR-078-01B	Wing Table - 3 Open Sides	34 $\frac{7}{8}$ "	17 $\frac{7}{8}$ "	31 $\frac{1}{4}$ "
TBOR-078-01C	Wing Table - 3 Open Sides w/ ABS Tray	35 $\frac{3}{8}$ "	18 $\frac{3}{8}$ "	31 $\frac{3}{8}$ "

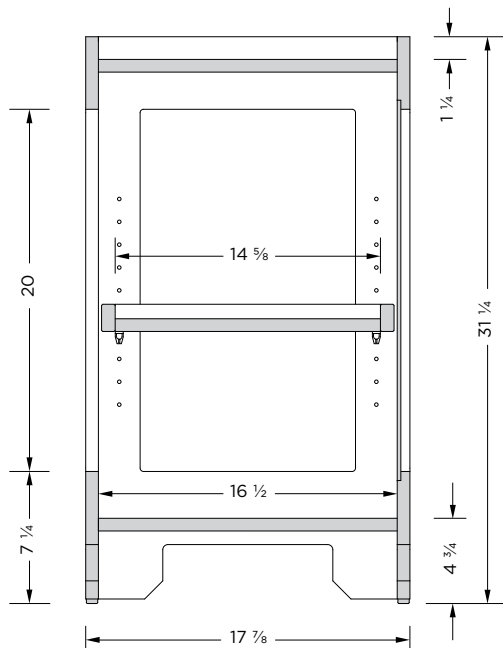
FEATURES:

- Birch/maple plywood and solid maple and construction
- Adjustable shelf on shelf pins
- Protective corner guards
- TBOR-078-01C
 - ABS tray without drain

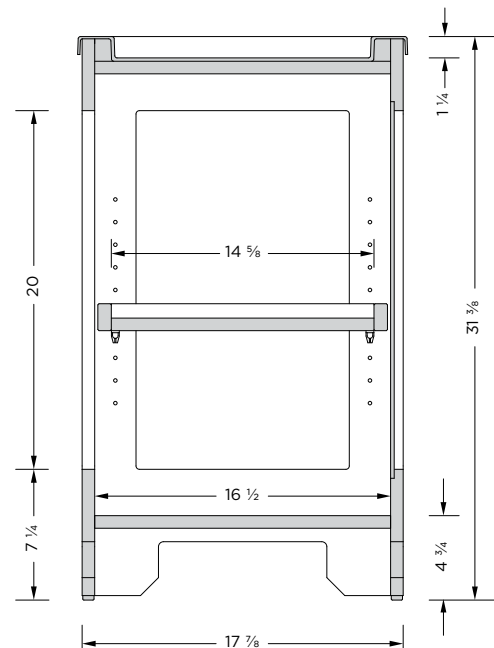
OPTIONS:

- ABS haircell liner
- $\frac{1}{2}$ " Foam insert
- 1 $\frac{1}{2}$ " ABS bumper
- Refer to Wood Stains Finishes

Note: Information and specifications may change due to engineering improvements.



TBOR-078-01B



TBOR-078-01C

CLOSED WING TABLES



MODEL	DESCRIPTION	LENGTH	DEPTH	HEIGHT
TBOR-079-01B	Closed Wing Table	34 7⁄8"	17 7⁄8"	31 1⁄4"
TBOR-079-01C	Closed Wing Table w/ ABS Tray	35 3⁄8"	18 3⁄8"	31 3⁄8"

- FEATURES:**
- Birch/maple plywood and solid maple and construction
 - Adjustable shelf on shelf pins
 - Protective corner guards
 - TBOR-079-01C
 - ABS tray without drain

- OPTIONS:**
- ABS haircell liner
 - 1⁄2" Foam insert
 - 1 1⁄2" ABS bumper
 - Refer to Wood Stains Finishes

Note: Information and specifications may change due to engineering improvements.

