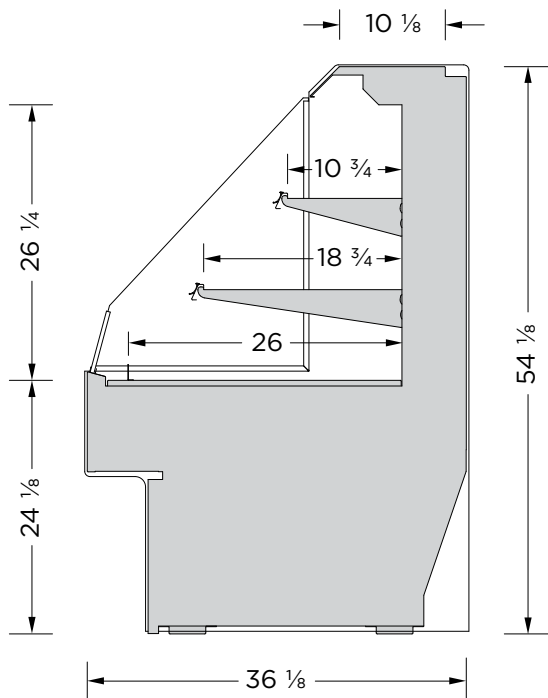
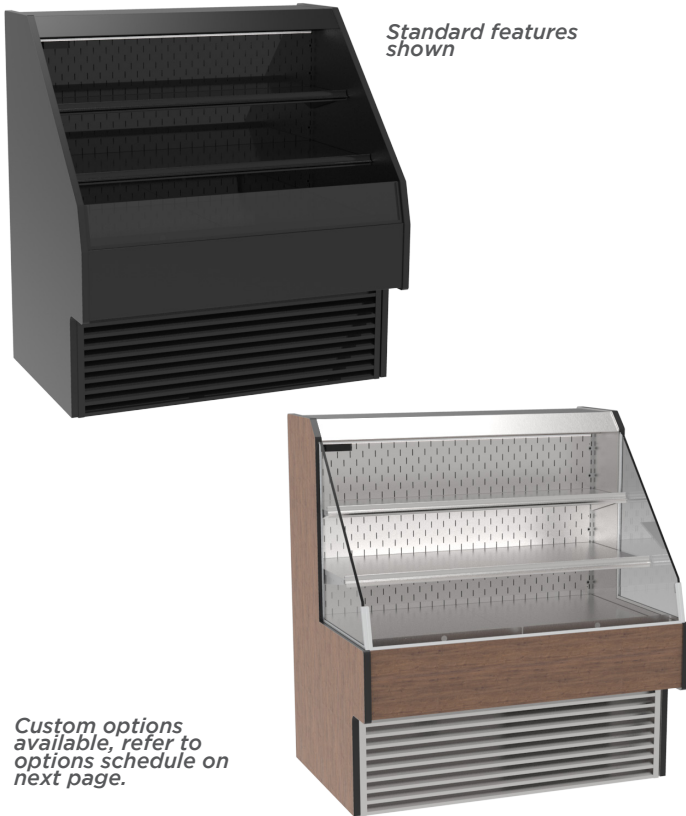


# THREE-LEVEL SELF-SERVICE DISPLAY - 54"H

 REFRIGERATED



MODEL	LENGTH
MRO-24-54	26 1/4"
MRO-38-54	40 1/4"
MRO-48-54	49 7/8"
MRO-57-54	59 3/8"
MRO-76-54	78 1/2"
MRO-96-54	97 5/8"

## FEATURES:

- Brushed Stainless steel internal cabinet construction
- Many exterior finish options available: powdercoat paint, brushed stainless steel, laminates and natural wood finishes
- 3 interior finish options: textured powdercoat black, white and brushed stainless steel
- Other custom options are offered. Refer to the options schedule on the next page
- A LED light strip is mounted on the top ledge of the display area. Various light intensities/spectrums are available
- 1-12" & 1-18" adjustable metal shelves with integrated front product stop and LED light strip mounted to the bottom of the shelves
- Designed to maintain the critical temperature of the products within the display at a range of 38- 41°F (3-5°C) with an ambient atmosphere of 75°F (24°C)/55% humidity
- ETL electrical certification and NSF-7 standards
- New R-513A (non-ozone depleting, low global warming potential) refrigerant used in the self-contained refrigeration system
- The refrigeration system is designed to pull fresh air from the front base of the display and vent through an integrated rear vent. The unique rear vent allows the display to be backed up against a wall or other displays/obstructions
- Remote refrigeration available. Contact Cayuga Displays for details

## SUGGESTED APPLICATIONS:

-  Cafe
-  Restaurant
-  Bakery
-  Butcher Shop
-  Deli
-  Produce

Note: Information and specifications may change due to engineering improvements.



# THREE-LEVEL SELF-SERVICE DISPLAY - 54"H

REFRIGERATED

## TECHNICAL SPECS

MODEL	LENGTH	VOLTS	AMPS	NEMA PLUG
MRO-24-54	26 ¼"	115	11.8	5-15P
MRO-38-54	40 ¼"	115	11.9	5-15P
MRO-48-54	49 ⅞"	115	12.0	5-15P
MRO-57-54	59 ⅝"	115/230	9.8	L14-20P
MRO-76-54	78 ½"	115/230	12.6	L14-20P
MRO-96-54	97 ⅝"	115/230	13.0	L14-20P

## STANDARD FEATURES:

- 3 interior finishes options: textured powdercoat black, white and brushed stainless steel
- Black or white laminate exterior finish
- Solid end panels with black or white interior finish
- A LED light strip is mounted on the top ledge of the display area
- 1-12" & 1-18" adjustable metal shelves with integrated front product stop and LED light strip mounted to the bottom of the shelves
- The refrigeration system is designed to pull fresh air from the front base of the display and vent through an integrated rear vent. The unique rear vent allows the display to be backed up against a wall or other displays/obstructions

## CUSTOM FEATURES:

### EXTERIOR FINISHES

Formica laminate finish: _____	
Other laminate finish (specify): _____	
Other custom laminate specs:	
Brushed Stainless Steel	
Oak Veneer Plywood	
- Vertical grain direction	
- Horizontal grain direction	
Birch/Maple Veneer Plywood	
- Vertical grain direction	
- Horizontal grain direction	
Clear finish applied to veneer	
Stain finish Choice: _____	
1" black McCue impact bumper strip applied to the front of the display	
Other McCue impact bumper strip colors available upon request	

### END PANELS

Interior laminate the same as exterior	
Brushed Stainless Steel interior	
Mirrored interior	
Tempered glass end panels	
Mirrored glass panels	
1" black McCue impact bumper strip applied to the front of the display	
Other McCue impact bumper strip colors available upon request	

### MISCELLANEOUS

2 ½" H x 14"D Stepped riser	
Perforated inlay panel for canted display	
Price tag moulding attached to shelf	
Heavy duty lockable casters	
Bolt-on top mounted dry shelving display	

## ADDITIONAL FEATURES:

- Designed to maintain the critical temperature of the products within the display at a range of 38-41°F (3-5°C) with an ambient atmosphere of 75°F (24°C)/55% humidity. Designed for holding pre-chilled product only
- Hot gas condensate evaporation system (most units)
- ETL listed and Sanitation certified to NSF-7
- 1 year parts and labor warranty

## STANDARD FEATURES SHOWN

## CUSTOM FEATURES SHOWN

### MRO-24-54



FINISHES:  
POWDERCOAT,  
TEXTURED BLACK



FINISHES:  
LAMINATE,  
BRAZILWOOD (7946)

### MRO-38-54



FINISHES:  
POWDERCOAT,  
TEXTURED BLACK



FINISHES:  
LAMINATE,  
SOFT GOLD MESH (4911)

### MRO-48-54



FINISHES:  
POWDERCOAT,  
TEXTURED BLACK



FINISHES:  
LAMINATE,  
PORT (D14)

STANDARD FEATURES SHOWN

CUSTOM FEATURES SHOWN

MRO-57-54



FINISHES:  
POWDERCOAT,  
TEXTURED BLACK

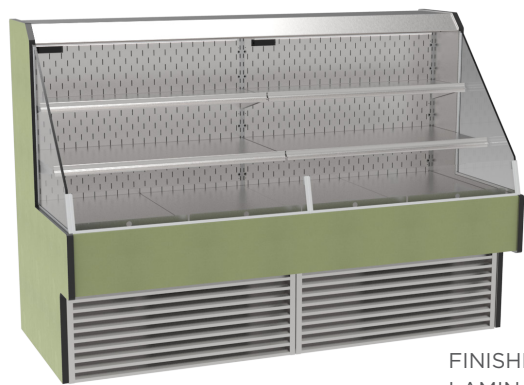


FINISHES:  
LAMINATE,  
VAPOR STRANDZ (4939K)

MRO-76-54

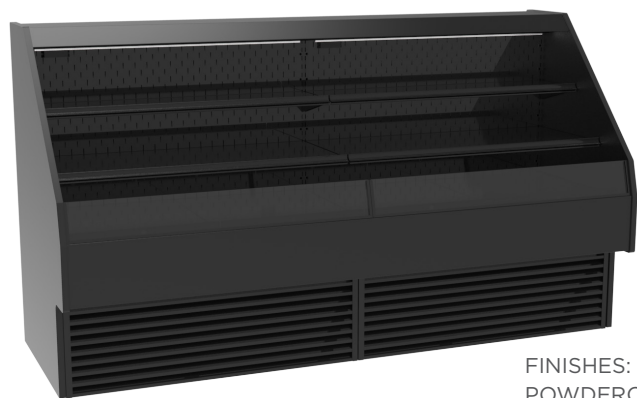


FINISHES:  
POWDERCOAT,  
TEXTURED BLACK

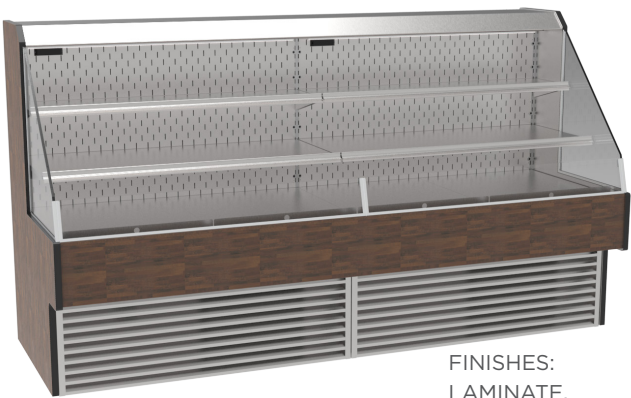


FINISHES:  
LAMINATE,  
SPROUT (4918)

MRO-96-54



FINISHES:  
POWDERCOAT,  
TEXTURED BLACK



FINISHES:  
LAMINATE,  
OLD MILL OAK (7973K)