



WINE & LIQUOR

COLLECTION

 **Cayuga** DISPLAYS







DEPARTMENT:

WINE & LIQUOR

Let us help create a liquor and wine shop that your customers choose as their regular supply source.

This department commonly has to succeed in presenting a maximum of product with a minimum of space. We offer a wide range of customizable shelving and mobile units, refrigerated cases and cross-merchandising options (like with cheese, for example). We can help develop the department that will get your products noticed. And with our layout expertise, you'll be sure to have a shop that truly feels worth the trip.

And when you work with Cayuga Displays, you can always be confident we'll help you to select the right product and options, so that you have the food presentation that is certain to elevate your customers' experience and enhance your brand - beautifully.

"Working with the Cayuga team was 100% positive."

Peterl Cavin,
Country Grocer,
Vancouver Island, BC

Table of Contents

Things to Consider	6
Refrigerated Wine Display	8
Wine Display	10
Fixed Shelving Island	
End Cap Island Shelving	13
Centre Island Shelving	14
Wall Shelving	15
Crate Style Shop Around Display	17
Finishes	
Laminate	18
Painted Metal	20
Wood Stains	21
How to Order	22

THINGS TO CONSIDER

Showcases are designed to display your refrigerated products at 38-41°F (4-5°C). Showcases are designed to perform in environments of maximum 75°F (23°C) and 55% relative humidity.

****NOTE: FOR YOUR SHOWCASE TO FUNCTION AT PEAK EFFICIENCY YOU WILL NEED PROPER CLIMATE CONTROL AND AIR CIRCULATION****

You need to consider the following when selecting a showcase and placing it in your store environment:

1 Consider nearby doorways and vestibules



A location near a doorway will negatively affect the airflow and holding temperature of both open and closed showcases.

2 Consider nearby windows



Direct sunlight will negatively affect the holding temperature of both open and closed showcases.

3 Consider nearby vent sources, hoods, cooking equipment and fans



HVAC ceiling vents, exhaust hoods, cooking equipment (steam heat) and ceiling fans will negatively affect the airflow of open showcases and will create condensation on the showcases if not properly managed.

4 Ensure your display is level and plumb



Ensure your showcase is plumb and level to allow for proper drainage of condensation water.

Please note: These are critical points to ensure the best results for your equipment and efficient space – and the best return on your investment!

Regular Maintenance and Cleaning

Your showcase will work at its peak performance with regular maintenance. Refer to the Owner's Manual for maintenance and cleaning instructions.

To access the Owner's manual either visit us at cayugadisplays.com/resources/manuals or access the QR code located on the electrical box of your case. You can also check out our online maintenance video.



Watch our maintenance videos at <https://cayugadisplays.com/resources/videos>



5 Leave appropriate space behind display



A 6" space is required behind any showcase that is against a wall or has a rear obstruction to allow for proper air flow around your showcase.

6 Clean your condenser grill and pre-filter



Use the included brush to regularly wipe away dust. Too much dust will not allow the refrigeration to work properly and could result in **expensive** damage.

****Refer to Owner's Manual for additional case cleaning checklist****

7 ONLY PRE-CHILLED product in case



Refrigerated displays are designed to KEEP COLD PRODUCT COLD - they are not designed to bring warm products down to a cold temperature. For food safety it is always imperative that warm product be properly chilled (using a blast chiller or cold room) prior to storing in the refrigerated display case.

8 Noise



Self-contained cases have compressors, motors and fans and these will make noise. Keeping your showcase serviced and clean will help keep the noise level under control, improve lifespan, and maintain efficiency.

9 Condensation on closed and open cases



Condensation is caused by warm, moist air coming into contact with cool surfaces. If the case environment is not maintained below 75°F/23°C and 55% relative humidity, condensation may occur.

REFRIGERATED WINE DISPLAY

 REFRIGERATED



MODEL	LENGTH
WC02S-48	48"

FEATURES:

- Remote refrigeration
- Exterior wood veneer construction or laminate finish options. Many stain finishes or laminate colors available
- Lockable framed wood doors with tempered thermal pane glass inserts
- 5 levels of front fixed wood display shelves with an integrated solid wood price tag mold. 9 standard wine bottles per shelf - stand up
- Wooden wine rack behind the display shelves designed to hold 170 standard sized wine bottles in lay down position
- LED lighting located under the top ledge and under each shelf
- Self-contained top mounted Refrigeration hidden behind a wooden fascia panel option available
- Designed to maintain product temperature of 54-56°F

SUGGESTED APPLICATIONS:

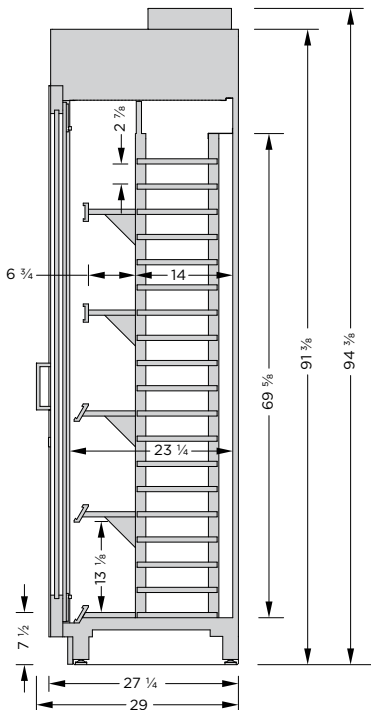


Wine & Liquor



Restaurant

Note: Information and specifications may change due to engineering improvements.





REFRIGERATED WINE DISPLAY

 REFRIGERATED

TECHNICAL SPECS				
MODEL	LENGTH	VOLTS	AMPS	NEMA PLUG
WC01S-48	48"	115	11.5	5-15P

TECHNICAL SPECS FOR SELF-CONTAINED REFRIGERATION AVAILABLE UPON REQUEST

STANDARD FEATURES:

- Remote refrigeration.
- Display depth 29".
- Two interior finish options, Wilsonart Monticello Maple (7925) or New Age Oak (7938).
- LED light strips are mounted on the top ledge of the display area and under each shelf level.

END PANELS	
Brushed Stainless Steel interior	
Mirrored interior	
Mirrored end panel glass	
1" black McCue impact bumper strip applied to the front of the display	
Other McCue impact bumper strip colors Available upon request	

ADDITIONAL FEATURES:

- Designed to maintain product temperature of 55°F with a maximum ambient atmosphere of 75°F/55% humidity
- 1 Year Parts & Labour Warranty for Self-Contained Refrigeration
- 2 Year Parts & Labour Warranty for Remote Refrigeration

EXTERIOR FINISHES	
Formica laminate finish: _____	
Other laminate finish (specify): _____	
Other custom laminate specs:	
Oak Veneer Plywood	
- Vertical grain direction	
- Horizontal grain direction	
Birch/Maple Veneer Plywood	
- Vertical grain direction	
- Horizontal grain direction	
Clear Finish applied to Veneer	
Stain Finish Choice: _____	
1" black McCue impact bumper strip applied to the front of the display	
Other McCue impact bumper strip colors Available upon request	

WINE DISPLAY

Finish: Oiled Cherry



12'L Wine Display shown:
SDBD-005-01A-A02 (Finished End Panel)
SDBD-005-01B (Wine Display Center)
SDBD-005-01B (Wine Display Center)
SDBD-005-01B (Wine Display Center)
SDBD-005-01A-A02 (Finished End Panel)

Finished End Panel



8' ½"L Wine Display shown:
SDBD-005-01A-A02 (Finished End Panel)
SDBD-005-01B (Wine Display Center)
SDBD-005-01B (Wine Display Center)
SDBD-005-01A-A02 (Finished End Panel)

Finish: Natural Maple

Applications

- The small footprint of the wine display can be bolted together to form a seamless look
- Top deck sits on a 30° angle to allow bottles to be showcased
- Levelers and removable kick

WINE DISPLAY



MODEL	DESCRIPTION	LENGTH	DEPTH	HEIGHT
SDBD-005-01B	Wine Display	47 ½"	27 ¼"	53"
SDBD-005-01A-A02	Finished End Panel	¾"	27 ¼"	53"

FEATURES:

- Birch/maple plywood, melamine and solid maple construction
- Top deck sits on 30° angle to allow bottles to be showcased
- Levelers
- Removable kick
- SDBS-005-01C consists of wine display (SDBD-005-01B) and one finished end panel

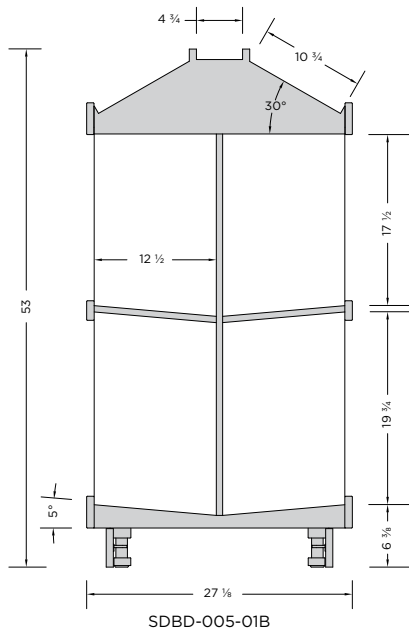
OPTIONS:

- Refer to Wood Stains Finishes

DO NOT EXCEED MAXIMUM WEIGHT PER SHELF

Note: Information and specifications may change due to engineering improvements.

SPECS BASED ON STANDARD WINE BOTTLE	
MAX. WEIGHT PER SHELF	ESTIMATED BOTTLE CAPACITY PER UNIT
40lbs	200



FIXED SHELVING ISLAND

Finish: Weathered Wood



10' 2 1/2"L Fixed Shelving Island shown:
SDIE-001-01B (End Cap Island Shelving)
SDBD-002-01B (48" Island Shelving)
SDBD-002-02B (36" Island Shelving)
SDIE-001-01B (End Cap Island Shelving)

Finished End Panel



8' 8"L Wine Display shown:
SDBD-002-01A-A06 (Finished End Panel)
SDBD-002-01B (48" Island Shelving)
SDBD-002-02B (36" Island Shelving)
SDIE-001-01B (End Cap Island Shelving)

Finish: Natural Maple

Applications

- The shelving island is designed to be bolted together to ensure that the units lineup.
- End caps have slat wall for extra merchandising area.
- Optional finished end panels are available for island lineups that have no or one end cap
- Top of the center units are designed to help showcase bottles by angling the bottles at approximately 37°.
- Around the exterior of the base is 1" McCue bumper.
- Levelers and ABS shelf liner.

FIXED SHELVING ISLAND

END CAP ISLAND SHELVING



Clear finish shown



Oiled Cherry finish shown.
Other finishes available - see chart.

MODEL	DESCRIPTION	LENGTH	DEPTH	HEIGHT
SDIE-001-01B	Fixed Shelving Island - End Cap	46"	20"	61 ¾"

FEATURES:

- Birch/maple plywood, slat wall with inserts and solid maple construction
- Levelers
- ABS shelf liner
- 1" McCue bumper

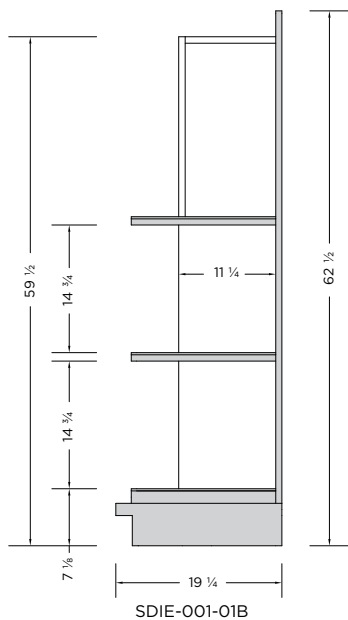
OPTIONS:

- Refer to Wood Stains Finishes

DO NOT EXCEED MAXIMUM WEIGHT PER SHELF

Note: Information and specifications may change due to engineering improvements.

SPECS BASED ON STANDARD WINE BOTTLE	
MAX. WEIGHT PER SHELF	ESTIMATED BOTTLE CAPACITY PER UNIT
180lbs	150



FIXED SHELVING ISLAND

CENTRE ISLAND SHELVING



MODEL	DESCRIPTION	LENGTH	DEPTH	HEIGHT
SDBD-002-01B	Fixed Shelving Island - 48"	48"	47 3/4"	60 5/8"
SDBD-002-02B	Fixed Shelving Island - 36"	36"	47 3/4"	60 5/8"
SDBD-002-01A-A06	Finished End Panel	3/4"	47 3/4"	60 5/8"

FEATURES:

- Birch/maple plywood and solid maple construction
- ABS shelf liner
- Removable kick
- Levelers

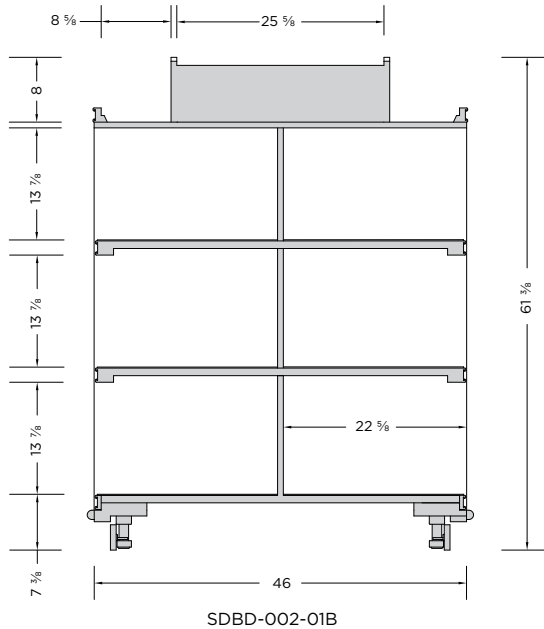
OPTIONS:

- Refer to Wood Stains Finishes

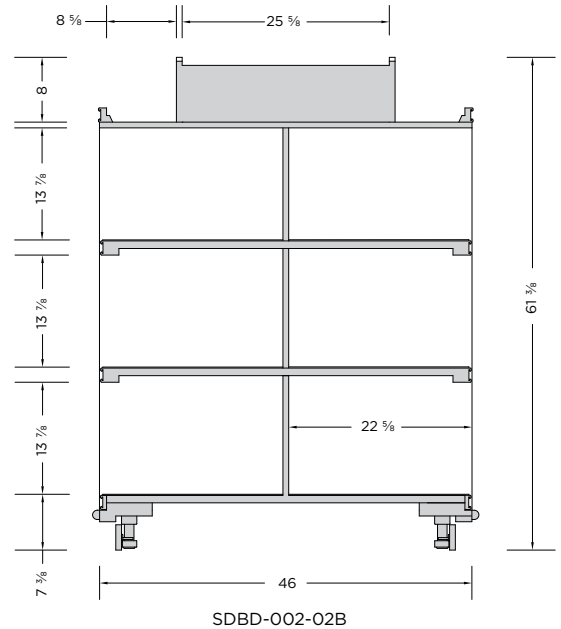
DO NOT EXCEED MAXIMUM WEIGHT PER SHELF

Note: Information and specifications may change due to engineering improvements.

SPECS BASED ON STANDARD WINE BOTTLE	
MAX. WEIGHT PER SHELF	ESTIMATED BOTTLE CAPACITY PER UNIT
250lbs	560



SPECS BASED ON STANDARD WINE BOTTLE	
MAX. WEIGHT PER SHELF	ESTIMATED BOTTLE CAPACITY PER UNIT
250lbs	440



WALL SHELVING

Finish: Weathered Wood



11' 1 1/2"L Wall Shelving shown:
 SDCT-010-01A-A05 (Finished End Panel)
 SDBS-002-01B (48" Fixed Shelving - 6 Level)
 SDBS-001-02B (48" Fixed Shelving - 5 Level)
 SDBS-001-01B (36" Fixed Shelving - 5 Level)
 SDCT-010-01A-A05 (Finished End Panel)

Finished End Panel

Unfinished End

11'L Wall Shelving (NO End Panels) shown:
 SDBS-002-01B (48" Fixed Shelving - 6 Level)
 SDBS-001-02B (48" Fixed Shelving - 5 Level)
 SDBS-001-01B (36" Fixed Shelving - 5 Level)



Finish: Natural Maple

Applications

- The wall shelving is designed to house the different sizes, shapes and packaging of liquor, wine and beer.
- Units can create a continuous run by fastening units together
- Optional finished end panels are available
- Each unit is equipped with levelers, ticket mold, removable kick and
- ABS shelf liners.
- At each end of shelving run is a finished end panel.

WALL SHELVING

FIXED WALL SHELVING



Clear finish shown

Finished End Panel



Concerto finish shown.
Other finishes available
- see chart.

MODEL	DESCRIPTION	LENGTH	DEPTH	HEIGHT
SDBS-001-01B	Wall Shelving w/ Fixed Shelves - 36"	36"	23"	78 5/8"
SDBS-001-02B	Wall Shelving w/ Fixed Shelves - 48"	48"	23"	78 5/8"
SDBS-002-01B	Wall Shelving w/ Fixed Shelves - 48"	48"	23"	78 5/8"
SDCT-010-01A-A05	Finished End Panel	3/4"	23"	78 5/8"

FEATURES:

- Birch/maple plywood and solid maple construction
- Levelers
- ABS shelf liner

OPTIONS:

- Refer to Wood Stains Finishes

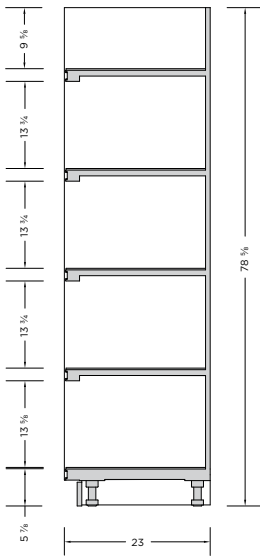
DO NOT EXCEED MAXIMUM WEIGHT PER SHELF

Note: Information and specifications may change due to engineering improvements.

SPECS BASED ON STANDARD WINE BOTTLE	
MAX. WEIGHT PER SHELF	ESTIMATED BOTTLE CAPACITY PER UNIT
250lbs	290

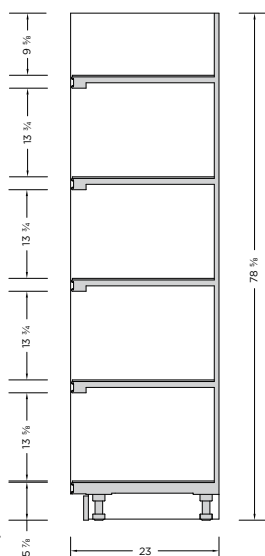
SPECS BASED ON STANDARD WINE BOTTLE	
MAX. WEIGHT PER SHELF	ESTIMATED BOTTLE CAPACITY PER UNIT
250lbs	380

SPECS BASED ON STANDARD WINE BOTTLE	
MAX. WEIGHT PER SHELF	ESTIMATED BOTTLE CAPACITY PER UNIT
250lbs	140



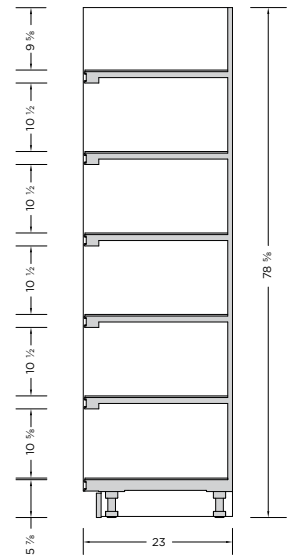
Designed for wine, liquor and beer

SDBS-001-01B



Designed for wine, liquor and beer

SDBS-001-02B



Designed for wine, liquor and beer

SDBS-002-01B

SHOP AROUND DISPLAY

CRATE STYLE



Clear finish shown



Select Cherry finish shown.
Other finishes available - see chart.

MODEL	DESCRIPTION	LENGTH	DEPTH	HEIGHT
SDSA-006-01B	Crate Style Shop Around	36 ¼"	36 ¼"	50"

FEATURES:

- Birch/maple plywood construction
- Heavy duty locking casters
- Bumper around base
- Sign track on all 4 sides for posters
- ABS shelf liner

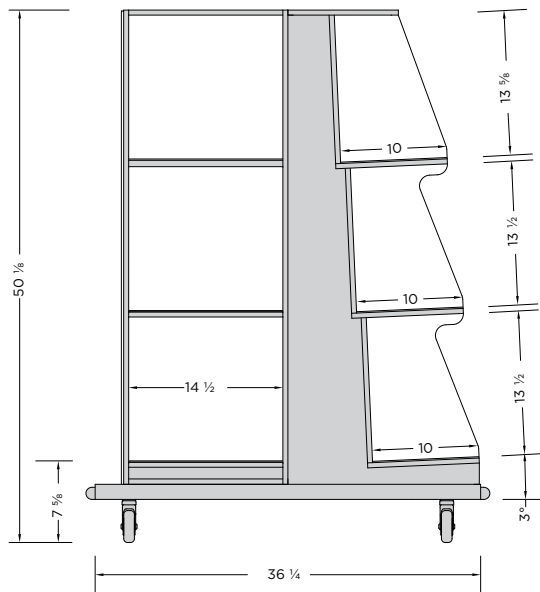
OPTIONS:

- Refer to Wood Stains Finishes

DO NOT EXCEED MAXIMUM WEIGHT PER SHELF

Note: Information and specifications may change due to engineering improvements.

SPECS BASED ON STANDARD WINE BOTTLE	
MAX. WEIGHT PER SHELF	ESTIMATED BOTTLE CAPACITY PER UNIT
140lbs	140



SDSA-006-01B



Formica® Laminate

Formica Group provides surfaces that fuse beautiful design with purposeful functionality. Formica® Products provide versatile surfacing solutions that are inspired by and adapt to the way people live, work and play.

Formica® Brand Laminate offers a broader range of looks than ever before. Transform spaces with our modern laminates that are as beautiful as they are durable. Mix and match solids, patterns and finishes.

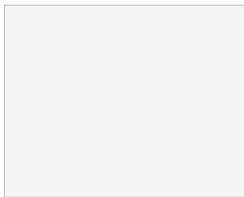
Product Features:

- Postforming
- Durable and Wear-resistant
- Horizontal and Vertical
- Impact Resistant

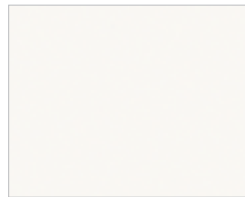
Formica® EliteForm

Our innovative Formica® EliteForm surfacing technology redefines the performance attributes of high pressure laminate to deliver a more durable laminate for today's market. Formica® Laminate with EliteForm features superior scratch resistance over other laminate brands, the ability to postform to a smaller radius with better blister resistance, and more durable, long-lasting surfaces, including the Gloss texture in horizontal applications. EliteForm comes standard on all Formica® Laminates, at no additional cost.

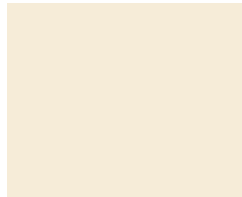
Price Group One: All Colours are matte (-58) finish



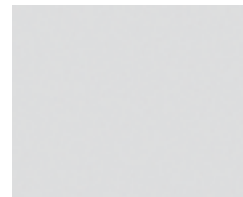
949
White



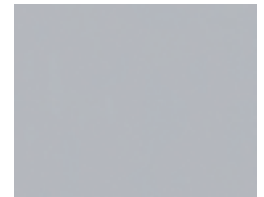
7197
Dover White



920
Almond



927
Folkstone



961
Fog



845
Spectrum Red



7897
Spectrum Green



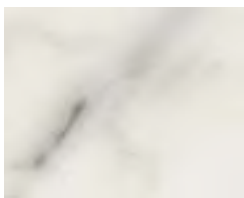
914
Marine Blue



2297
Terril



909
Black



6696
Carrara Bianco



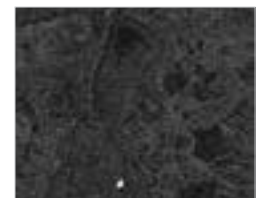
9476
White Ice Granite



9497
Silver Quartzite



7732
Butterum Granite



9527
Black Shalestone



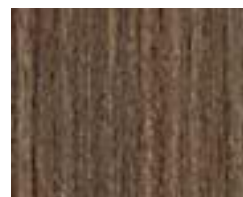
8844
Aged Ash



5883
Pecan Woodline



5884
Chestnut Woodline



9283
Walnut Riftwood



6414
Black Riftwood

Price Group Two: All Colours are matte finish



6997
Pale Brushstroke



6998
Wood Brushstroke



7813
Cardboard Solidz



9319
Stainless



8918
Blackened Steel



9310
White Marble Herringbone



9285
White Twill



6698
Paloma Pear



503
Stone Grafix



8830
Elemental Concrete



8841
White Ash



5785
Ashwood Beige



5795
Camel Elm



8845
Bleached Legno



8916
Blackened Fiberwood



86992
Hardrock Maple



7012
Amber Maple



8677
Scandi Rift Oak



6995
Cherry Walnut



7759
Select Cherry



Formica Canada Inc. is located in St-jean-sur-Richelieu, Quebec, and employs more than 250 people.

Formica Canada is proud to be part of the Well Made Here local purchasing program.

As the inventor of high pressure laminate, Formica Corporation has always worked to provide innovative, high quality products. Efficient use of resources is at our core, and we have taken many steps to improve our environmental footprint - from reusing the water in our presses to incorporating recycled materials into our surfacing products. We are committed to a long-term planning horizon that includes becoming an industry-leading environmental steward.



For larger laminate sample, please visit:
cayugadisplays.com 1-800-839-5536
formica.com 1-800-FORMICA™

PAINTED METAL

- **Standard products in stock**
- **RAL Program** colours not listed are also available upon request
- **Non-RAL Program** colours have long lead times and could affect deliver date

CAYUGA STOCK COLOURS



Cayuga Black



Cayuga White

Cayuga black and white colours come in a textured finish.

Matte finish is available upon request.

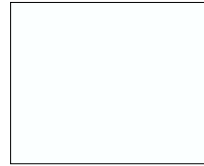
RAL STOCK COLOURS



Traffic Blue
Ral 5017



Cream
Ral 9001



Pure White
Ral 9010



Traffic Orange
Ral 2009



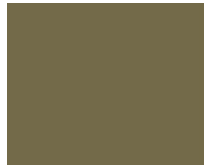
Pebble Grey
Ral 7032



Basalt Grey
Ral 7012



Traffic Grey
Ral 7042



Quartz Grey
Ral 7039



Traffic Red
Ral 3020

WOOD STAINS

CAYUGA STANDARD WOOD GRAINS



Oiled Cherry
Match to Pionite/Panolam
WC421 (Oiled Cherry)



Wild Cherry
Match to Formica 5904-43
(Wild Cherry)



Select Cherry
Match to Formica 7759
(Select Cherry)



Choco Cherry
Match to Panval/Uniboard
207 (Choco Cherry)



Natural Maple
Match to Formica 86992-58
(Hardrock Maple)



Pearwood
Match to Pionite/Panolam
WX031 (Pearwood)



Weathered Wood
Match to Formica 8909-NF
(Cascara Teakwood)



Concerto
Match to Arborite T485/
Tafisa L485 (Concerto)



Danish Walnut
Match to Arborite W305
(Parliament Walnut)



Witchcraft
Match to Pionite/Panolam
WX421 (Witchcraft)



Iron Mountain
Match to Formica 912-58
(Storm)



Baloil
Match to Formica 6414 NG
(Black Riftwood)

Refer to physical swatches for a true representation of colors, above images may appear slightly different than actual samples.

HOW TO ORDER

We'll help you select the right case for your requirements. The steps below will help us to serve you best.

- 1 Choose the showcase that meets your display requirements from the product specification sheets.
- 2 Review the options table found on the specification sheet and make your selections of the options provided.
- 3 Select from the large pallet of colours found on the last five pages of the brochure, or choose a stainless steel, standard black or white for the exterior finish of your showcase.
- 4 E-mail your request for a quote to your Cayuga sales representative or sales@cayugadisplays.com and we will quickly respond to your request. Please include your full contact information in case we have any questions.

Contact the inside sales team

Cayuga Displays

E: sales@cayugadisplays.com

T: 1-800-839-5536

F: 1-905-772-3179



T: 800.839.5536 F: 905.772.3179

E: sales@cayugadisplays.com

A: 88 Talbot St E, PO Box 130

Cayuga, ON N0A 1E0

