



## Formica® Laminate

Formica Group provides surfaces that fuse beautiful design with purposeful functionality. Formica® Products provide versatile surfacing solutions that are inspired by and adapt to the way people live, work and play.

Formica® Brand Laminate offers a broader range of looks than ever before. Transform spaces with our modern laminates that are as beautiful as they are durable. Mix and match solids, patterns and finishes.

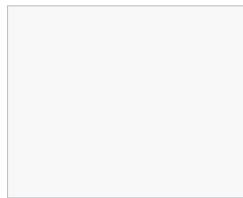
### Product Features:

- Postforming
- Durable and Wear-resistant
- Horizontal and Vertical
- Impact Resistant

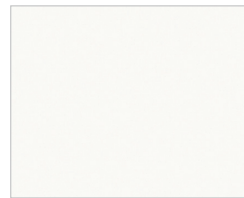
## Formica® EliteForm

Our innovative Formica® EliteForm surfacing technology redefines the performance attributes of high pressure laminate to deliver a more durable laminate for today's market. Formica® Laminate with EliteForm features superior scratch resistance over other laminate brands, the ability to postform to a smaller radius with better blister resistance, and more durable, long-lasting surfaces, including the Gloss texture in horizontal applications. EliteForm comes standard on all Formica® Laminates, at no additional cost.

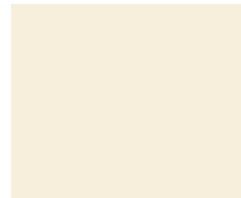
### Price Group One: All Colours are matte (-58) finish



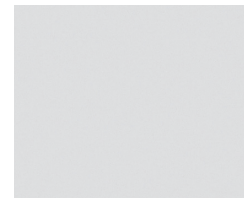
**949**  
White



**7197**  
Dover White



**920**  
Almond



**927**  
Folkstone



**961**  
Fog



**845**  
Spectrum Red



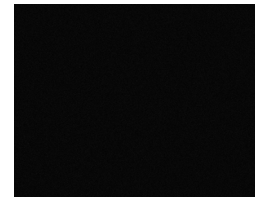
**7897**  
Spectrum Green



**914**  
Marine Blue



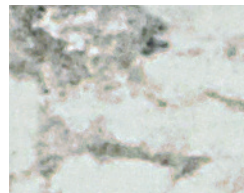
**2297**  
Terril



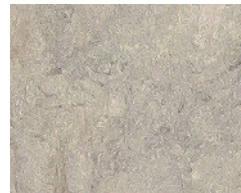
**909**  
Black



**6696**  
Carrara Bianco



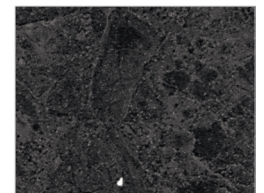
**9476**  
White Ice Granite



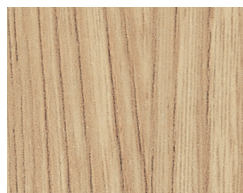
**9497**  
Silver Quartzite



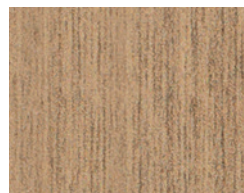
**7732**  
Butterum Granite



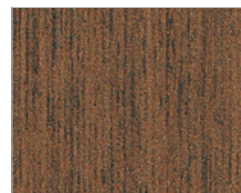
**9527**  
Black Shalestone



**8844**  
Aged Ash



**5883**  
Pecan Woodline



**5884**  
Chestnut Woodline



**9283**  
Walnut Riftwood



**6414**  
Black Riftwood

## Price Group Two: All Colours are matte finish



**6997**  
Pale Brushstroke



**6998**  
Wood Brushstroke



**7813**  
Cardboard Solidz



**9319**  
Stainless



**8918**  
Blackened Steel



**9310**  
White Marble Herringbone



**9285**  
White Twill



**6698**  
Paloma Pear



**503**  
Stone Graft



**8830**  
Elemental Concrete



**8841**  
White Ash



**5785**  
Ashwood Beige



**5795**  
Camel Elm



**8845**  
Bleached Legno



**8916**  
Blackened Fiberwood



**86992**  
Hardrock Maple



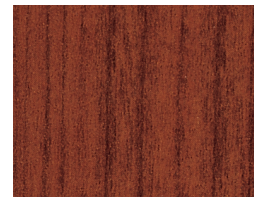
**7012**  
Amber Maple



**8677**  
Scandi Rift Oak



**6995**  
Cherry Walnut



**7759**  
Select Cherry



Formica Canada Inc. is located in St-jean-sur-Richelieu, Quebec, and employs more than 250 people.

Formica Canada is proud to be part of the Well Made Here local purchasing program.

As the inventor of high pressure laminate, Formica Corporation has always worked to provide innovative, high quality products. Efficient use of resources is at our core, and we have taken many steps to improve our environmental footprint - from reusing the water in our presses to incorporating recycled materials into our surfacing products. We are committed to a long-term planning horizon that includes becoming an industry-leading environmental steward.



For larger laminate sample, please visit:  
[cayugadisplays.com](http://cayugadisplays.com) 1-800-839-5536  
[formica.com](http://formica.com) 1-800-FORMICA™