



CONVENIENCE / SMALL STORE SOLUTIONS

 **Cayuga** DISPLAYS



FreshGOHotBar

MOBILE HOT FOOD BAR - DOUBLE SIDED HOT WELL

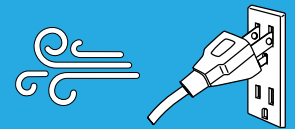
Looking for a flexible solution for hot foods merchandising? The [Fresh Go Hot Bar](#) is ideal for **breakfast sandwich, tacos, or a wing station.**

Key features:

- Cayuga's proprietary waterless heating technology for performance, efficiency, and ease of cleaning
- Available in 3 to 6 well configurations
- All metal structure with exterior finish options (clip-on panels)
- Casters (2 locking)
- Tempered glass sneeze guard
- LED lighting
- Overhead ceramic heat emitters
- Brushed Stainless Steel counter, tub, canopy, sneezeguard supports and top cap
- Optional packaging shelf available
- Meets UL, CSA and NSF standards



[FreshGoHot Bar](#)



FreshGOColdBar

MOBILE HOT FOOD BAR - DOUBLE SIDED HOT WELL

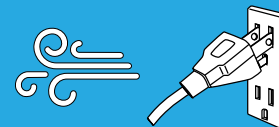
Looking for a flexible solution for cold foods merchandising?
The [Fresh Go Cold Bar](#) is ideal for **salads, olives, and antipasto**.

Key features:

- Cayuga's proprietary air-over cooling technology for food safe performance, efficiency, and ease of cleaning
- Available in 3 to 6 well configurations
- All metal structure with exterior finish options (clip-on panels)
- Casters (2 locking)
- Tempered glass sneezeguard
- LED lighting
- Removable stainless steel drip trays to catch spills for easy cleaning and maintenance
- Brushed Stainless Steel counter, tub, canopy, sneezeguard supports and top cap
- Optional packaging shelf available
- All venting underneath, no ugly side vents
- Super E-coating on coils to prevent corrosion
- Meets UL, CSA and NSF standards
- Low GWP R-513a refrigerant



[FreshGoCold Bar](#)



FreshGOBin™

MOBILE ISLAND - CRITICAL TEMPERATURE SINGLE POD

Looking for a flexible, high-impact grab-and-go refrigerated display? The [Fresh Go Bin](#) is an idea solution for:

- Produce
- Juices/Beverages
- Prepared foods/meal kits
- Cut fruits & salads
- Spreads & dips
- Cheese & deli meats
- Fresh meats
- Yogurts & other dairy and more!

Key features:

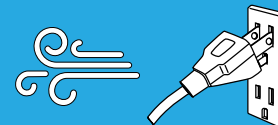
- Critical temperature (36°- 38°F) and Berry temperature (45° - 50°F)
- 9" H merchandising zone
- Designed to plug into a 115V dedicated circuit
- All venting underneath (no ugly side vents)
- Metal construction with clip-on panels
- Matching dry bins available
- Optional cross merchandising shelf available
- Hot gas condensate evaporation system
- ETL safety and sanitation certified
- Meets UL, CSA, and NSF standards
- Low GWP R-513a refrigerant

"We have now purchased two of the Cayuga bins. Response to them has been outstanding. The first bin has cut watermelon and husked corn in it. Sales of these two items has increased over 70% since they have been featured in the bins. We have another bin in the meat department. We have just received it and have been using it to do mass WOW displays of smokies. This item has increased in sales by over 50%. Plenty of comments on what a nice display these bins make. We had a couple of little glitches to start with, mostly with getting the temperature right for the product. We had to adjust defrost times as well. We received great support and follow up with the technical support people. A very easy to use bin that is portable and adds great display space."

Darren Roe (Neepawa Co-op)



[FreshGoBin - Single POD](#)



MOBILE ISLAND - CRITICAL TEMPERATURE 2-POD

Looking for a flexible, high-impact grab-and-go refrigerated display? The [Fresh Go Bin](#) is an idea solution for:

- Produce
- Juices/Beverages
- Prepared foods/meal kits
- Cut fruits & salads
- Spreads & dips
- Cheese & deli meats
- Fresh meats
- Yogurts & other dairy and more!

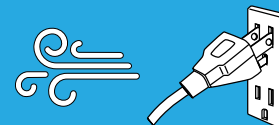
Key features:

- Critical temperature (36°- 38°F) and Berry temperature (45° - 50°F)
- 9" H merchandising zone
- Designed to plug into a 115V dedicated circuit
- All venting underneath (no ugly side vents)
- Metal construction with clip-on panels
- Matching dry bins available
- Optional cross merchandising shelf available
- ETL safety and sanitation certified
- Meets UL, CSA, and NSF standards
- Low GWP R-513a refrigerant



[FreshGoBin - 2-POD](#)

GRAB & GO - 53”H



GRAB & GO - MULTI-LEVEL SELF-SERVICE DISPLAY-53”H

Looking for a flexible, high-impact grab-and-go refrigerated display that's not too tall?

The [MD3M](#) is an ideal solution for:

- Produce
- Juices/Beverages
- Prepared foods/meal kits
- Cut fruits & salads
- Spreads & dips
- Cheese & deli meats
- Fresh meats
- Yogurts & other dairy and more!

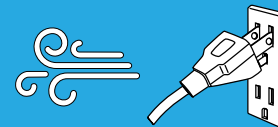
Key Features:

- Many exterior finishes available: powdercoat paint, brushed stainless steel, laminates and natural wood finishes
- 3 interior finish options: textured powdercoat black, white and brushed stainless steel
- 1-14” and 1-16” adjustable metal shelves with integrated LED lighting
- ETL safety and sanitation certified
- Meets UL, CSA, and NSF standards
- Low GWP R-513a refrigerant



[MD3M](#)

GRAB & GO -63”H



GRAB & GO - MULTI-LEVEL SELF-SERVICE DISPLAY-63”H

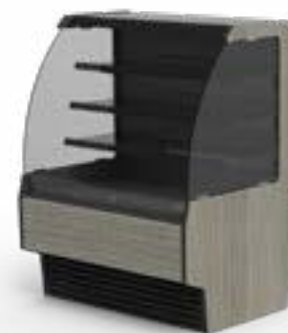
Looking for a flexible, high-impact grab-and-go refrigerated display that's not too tall?

The [MD4M](#) is an ideal solution for:

- Produce
- Juices/Beverages
- Prepared foods/meal kits
- Cut fruits & salads
- Spreads & dips
- Cheese & deli meats
- Fresh meats
- Yogurts & other dairy and more!

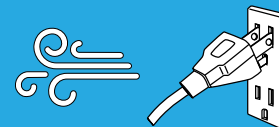
Key features:

- Many exterior finishes available: powdercoat paint, brushed stainless steel, laminates and natural wood finishes
- 3 interior finish options: textured powdercoat black, white and brushed stainless steel
- 1-12”, 1-14” and 1-16” adjustable
- metal shelves with integrated LED lighting
- ETL safety and sanitation certified
- Meets UL, CSA, and NSF standards
- Low GWP R-513a refrigerant



[MD4M](#)

GRAB & GO - 76”H



GRAB & GO - MULTI-LEVEL SELF-SERVICE DISPLAY-76”H

Looking for a flexible, high-impact grab-and-go refrigerated display that's not too tall?

The [MD5M](#) is an ideal solution for:

- Produce
- Juices/Beverages
- Prepared foods/meal kits
- Cut fruits & salads
- Spreads & dips
- Cheese & deli meats
- Fresh meats
- Yogurts & other dairy and more!

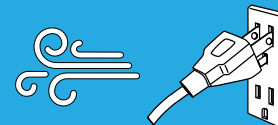
Key Features:

- Many exterior finishes available: powdercoat paint, brushed stainless steel, laminates and natural wood finishes
- 3 interior finish options: textured powdercoat black, white and brushed stainless steel
- 3-14” and 1-16” adjustable metal shelves with integrated LED lighting
- ETL safety and sanitation certified
- Meets UL, CSA, and NSF standards
- Low GWP R-513a refrigerant



[MD5M](#)

GRAB & GO - 42”H



GRAB & GO - SINGLE-LEVEL SELF-SERVICE DISPLAY-42”H

Looking for a flexible, high-impact grab-and-go refrigerated display that's not too tall?

The [MRO-42](#) is a great option.

- Produce
- Juices/Beverages
- Prepared foods/meal kits
- Cut fruits & salads
- Spreads & dips
- Cheese & deli meats
- Fresh meats
- Yogurts & other dairy and more!

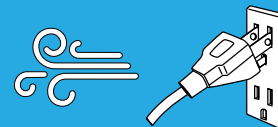
Key features:

- Many exterior finishes available: powdercoat black, white and brushed stainless steel, laminates and natural wood finishes
- 3 interior finish options: textured
- Meets UL, CSA, & NSF standards
- Low GWP R-513a refrigerant



[MRO-42](#)

GRAB & GO - 49”H



GRAB & GO - MULTI-LEVEL SELF-SERVICE DISPLAY-49”H

Looking for a flexible, high-impact grab-and-go refrigerated display that's not too tall?

The [MRO-49](#) is an ideal solution for:

- Produce
- Juices/Beverages
- Prepared foods/meal kits
- Cut fruits & salads
- Spreads & dips
- Cheese & deli meats
- Fresh meats
- Yogurts & other dairy and more!

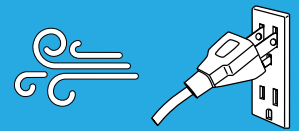
Key features:

- Many exterior finishes available: brushed stainless steel
- powdercoat paint, brushed stainless steel, laminates and natural wood finishes
- 3 interior finish options: textured powdercoat black, white and
- 1-12” adjustable metal shelves with integrated LED lighting
- Meets UL, CSA, & NSF standards
- Low GWP R-513a refrigerant



[MRO 49”H](#)

GRAB & GO - 54”H



GRAB & GO - MULTI-LEVEL SELF-SERVICE DISPLAY-54”H

Looking for a flexible, high-impact grab-and-go refrigerated display that's not too tall?

The [MRO-54](#) is a great option.

- Produce
- Juices/Beverages
- Prepared foods/meal kits
- Cut fruits & salads
- Spreads & dips
- Cheese & deli meats
- Fresh meats
- Yogurts & other dairy and more!

Key features:

- Many exterior finishes available: brushed stainless steel
- powdercoat paint, brushed stainless steel, laminates and natural wood finishes
- 3 interior finish options: textured powdercoat black, white and
- 1-12” & 1-18” adjustable metal shelves with integrated LED lighting
- Meets UL, CSA, & NSF standards
- Low GWP R-513a refrigerant



[MRO-54](#)



GRAB & GO - MULTI-LEVEL SELF-SERVICE DISPLAY-54" & 60"H

Looking for a lower self-service, high-impact display in a remote refrigeration set-up? Something that is modular with size and other options?

The [ISSL](#) is a great option.

- Produce
- Prepared foods/meal kits
- Cut fruits & salads
- Beverages
- Spreads & dips
- Cheese & deli meats
- Fresh meats
- Yogurts & other dairy and more!

Key features:

- **Remote refrigeration option only for this display profile.**
- 2 display depths: small & medium
- Many exterior finishes: brushed stainless steel, powdercoat paint, laminates & natural wood finishes
- 3 interior finish options: textured powdercoat black, white and brushed stainless steel
- 60"H medium depth: 1-12", 1-14" & 1-16" (small depth: 1-10", 1-12" & 1-14") adjustable metal shelves with LED lighting (54" display: medium 1-12" & 1-14" or small 1-10" & 1-12" shelves)
- ETL safety & sanitation certified
- Meets UL, CSA, & NSF standards
- CO₂ refrigerant available



[ISSL](#)



GRAB & GO - MULTI-LEVEL SELF-SERVICE DISPLAY-76" & 82"H

Looking for a taller, high impact display in a remote refrigeration set-up? Something that isn't too deep?

The [SSL](#) is a great option.

- Produce
- Prepared foods/meal kits
- Cut fruits & salads
- Beverages
- Spreads & dips
- Cheese & deli meats
- Fresh meats
- Yogurts & other dairy and more!

Key features:

- **Remote refrigeration option only for this display profile.**
- Two display depths available: small & medium
- Many exterior finishes available: powdercoat paint, brushed stainless steel, laminates and natural wood finishes
- 3 interior finish options: textured powdercoat black, white and brushed stainless steel
- 76"H medium display depth: 4-16" (small display depth: 4-14") adjustable metal shelves with integrated LED lighting (82"H display: medium 5-16" or small 5-14" shelves)
- ETL safety & sanitation certified
- Meets UL, CSA, & NSF standards
- CO₂ refrigerant available



[SSL](#)



HOT BAR - 90° FRONT SNEEZEGUARD, SINGLE SIDED

Looking for a flexible solution for hot foods merchandising?
The [Hot Bar](#) is ideal for **breakfast sandwich, tacos, or a wing station.**

Key features:

- Cayuga's proprietary waterless heating technology for performance, efficiency, and ease of cleaning
- Available in different module sizes to allow custom lengths
- All metal structure with exterior finish options (clip on panels)
- Fixed tempered glass sneezeguard
- Optional recessed packaging shelf available
- Overhead ceramic heat emitters
- Brushed Stainless Steel counter, tub, canopy, sneezeguard supports and top cap
- Meets UL, CSA, & NSF standards



[T3b-FBSH \(Hot Wells\)](#)

* FOOD PANS NOT INCLUDED

HOT FOOD BAR - ANGLED SNEEZEGUARD



HOT BAR - ANGLED FRONT SNEEZEGUARD, SINGLE SIDED

Looking for a flexible solution for cold foods merchandising?
The [Hot Bar](#) is ideal for **salads, olives, and antipasto**.

Key features:

- Cayuga's proprietary waterless heating technology for performance, efficiency, and ease of cleaning
- Unique convertible sneeze guard design
- Available in different module sizes to allow custom lengths
- All metal structure with exterior finish options (clip on panels)
- Tempered glass sneeze guard
- Overhead ceramic heat emitters
- Brushed Stainless Steel counter, tub, canopy, sneeze guard supports and top cap
- Optional packaging shelf available
- Meets UL, CSA, & NSF standards



[T3a-FBSH \(Hot Wells\)](#)

* FOOD PANS NOT INCLUDED



COLD BAR - 90° FRONT SNEEZEGUARD, SINGLE SIDED

Looking for a flexible solution for hot foods merchandising?
The [Cold Bar](#) is ideal for **breakfast sandwich, tacos, or a wing station.**

Key features:

- Cayuga Displays proprietary air-over refrigeration system is designed to maximize product freshness and quality
- Food pans can be displayed in a flat or slightly angled position
- Brushed stainless steel tub and sneezeguard canopy
- Fixed tempered sneezeguard glass
- All metal base cabinet construction
- Modular design: numerous combinations of well module configurations and Food Bar End Modules available
- Optional recessed packaging shelf available
- Meets UL, CSA, & NSF standards

*** FOOD PANS NOT INCLUDED**



[T3b-FBSA \(Cold Wells\)](#)

COLD FOOD BAR - ANGLED SNEEZEGUARD



COLD BAR - ANGLED FRONT SNEEZEGUARD, SINGLE SIDED

Looking for a flexible solution for cold foods merchandising?
The [Cold Bar](#) is ideal for **salads, olives, and antipasto**.

Key features:

- Cayuga Displays proprietary air-over refrigeration system is designed to maximize product freshness and quality
- Food pans can be displayed in a flat or slightly angled position
- Brushed stainless steel tub and sneeze guard canopy
- Unique convertible sneeze guard design - service to self-service
- LED lighting
- All metal base cabinet construction
- Modular design: numerous combinations of well module configurations and Food Bar End Modules available
- CO2 and self-contained options available
- Meets UL, CSA, & NSF standards

* FOOD PANS NOT INCLUDED



[T3a-FBSA \(Cold Wells\)](#)



FOOD PREPERATION & SELF-SERVICE - REMOTE

Looking for a flexible solution for food preparation with a self-service merchandising option?

The [DOUW](#) is a great option.

- Juices/Beverages
- Prepared foods/meal kits
- Cut fruits & salads
- Sandwiches
- Pastries & baked goods
- Yogurts & other dairy and more!

Key features:

- Many exterior finishes: brushed stainless steel, powdercoat paint, laminates & natural wood finishes
- 3 interior finish options: textured powdercoat black, white and brushed stainless steel
- The refrigerated self-service display has 1-12"D adjustable metal shelf with a LED light strip
- The refrigerated rear storage is constructed of brushed stainless and has thermal sliding doors
- The top preparation area has an integrated front refrigerated well to hold food pans. The prep counter is brushed stainless and has a removeable white nylon cutting board
- ETL safety & sanitation certified
- Meets UL, CSA, & NSF standards
- CO₂ and self-contained options available



[DOUW](#)

COUNTERTOP PASTRY DISPLAY



PASTRY/DOUGHNUT CASE - COUNTERTOP

Looking for a countertop display for pastries and donuts in a quality tempered glass construction?

The [SPCD-007](#) is a great solution.

Key features:

- 39"L x 24"D x 50 1/8"H
- Brushed Stainless Steel frame & 6mm tempered glass construction
- Rear sliding doors
- Adjustable Stainless Steel shelves sit at 15° angle
- LED lighting in the canopy and under the top 2 shelves
- Two length display options available: 28"L and 39"L
- Chrome finish wire baskets (18"Dx12"Wx2"H), 28" length display comes with 6 wire baskets and 39" length display comes with 9 wire baskets



[SPCD-007](#)

MODULAR PASTRY CASE - 33"D



FREE-STANDING PASTRY CASE - STAND ALONE 33"D

Looking for a flexible solution for pastry and donut merchandising in a narrow footprint?

The [CSFL-033](#) is a great, flexible solution.

Key features:

- Birch/maple plywood, melamine & solid maple construction, mirror back and interior gables
- Standard stain exterior finish
- Tempered glass doors with soft closing stop
- Stainless Steel Sani Legs, removable kicks & casters for ease of shipping
- 1 ½" black ABS bumper
- Metal adjustable shelves with ticket mold - 20° angle (designed to hold standard 18" x 26" baking tray)
- LED lighting and fans in canopy
- LED lighting under top 3 shelves
- Tissue paper holder (6 ½" x 7" x 2 ⅝"D) & garbage bin in ledge



[CSFL-033](#)

MODULAR PASTRY CASE - 37"D



FREE-STANDING CASE - SEAMLESS OR STAND ALONE-37"D

Looking for a seamless and flexible solution for pastry and donut merchandising, in a narrow footprint?

The [CSFL-031](#) is an ideal solution.

Key features:

- Birch/maple plywood, melamine & solid maple construction, mirror back and interior gables
- Standard stain exterior finish
- Tempered glass doors with soft closing stop
- Stainless Steel Sani Legs, removable kicks & casters for ease of shipping
- 1 ½" black ABS bumper
- Metal adjustable shelves with ticket mold - 20° angle (designed to hold standard 18" x 26" baking tray)
- LED lighting and fans in canopy
- LED lighting under top 3 shelves
- Tissue paper holder (6 ½" x 7" x 2 5/8"D) & garbage bin
- Modules can be joined to create a longer seamless lineup



[CSFL-031](#)

MODULAR PASTRY CASE - 54”H



FREE-STANDING PASTRY/DOUGHNUT CASE - FRONT LOADING

Looking for a flexible, low profile solution for pastry and donut merchandising?

The [CSFL-050](#) is an ideal solution.

Key features:

- Birch/maple plywood, melamine, tempered glass & metal construction
- Mirrored back
- Shelves sit on a 15° angle
- Base Storage
- Tissue Dispenser
- LED lighting
- Corner guards
- ABS bumper
- Designed for 6 @ 18" x 26" trays



[CSFL-050](#)

MODULAR PASTRY CASE - 54" H REAR LOADING



FREE-STANDING PASTRY/DOUGHNU CASE - REAR LOADING

Looking for a flexible, low profile solution for pastry and donut merchandising?

The [CSRL-014](#) is an ideal solution.

Key features:

- Birch/maple plywood, melamine, tempered glass & metal construction
- Rear sliding glass doors
- Shelves sit on a 15° angle
- Base Storage
- Tissue Dispenser
- LED lighting
- Corner guards
- ABS bumper
- Rear sliding glass doors
- Designed for 12 @ 9" x 26" trays



[CSRL-014](#)

MOBILE DISPLAY RACK



DISPLAYS - MOBILE SHELVING

Looking for a flexible and modular solution for bakery products? The [SGMB-005](#) is a great solution.

Key features:

- A versatile merchandising display that can be assembled in a straight run or in an island format
- Both the 3' and 4' units allow for multiple combinations
- There are two deck heights available (16" & 24") for the units with dowel backs
- Birch/maple plywood & solid maple construction
- Heavy duty casters (2 locking)
- Protective leg caps
- ABS bumper
- Adjustable shelves - flat and 15° angle
- Shelf depths: 12"/14"/16"



[SGMB-005](#)

SHELVING DISPLAY



SHELVING DISPLAY - SHOP AROUND 48”H

Looking for a flexible, high impact solution for displaying various dry products in a warmer look?

The [Shop Around Shelving Display](#) are a great solution.

Key features:

- Birch/maple plywood and solid maple construction
- Levelers and ABS bumper
- 12 Adjustable shelves
- Three sizes available:
 - 37” x 37”
 - 41” x 41”
 - 48” x 48”



[Shop Around Shelving Display](#)

TABLES - STEPPED NESTING



TABLES - 3 PIECE STEPPED NESTING TABLES

Looking for a flexible merchandising solution for packaged baked goods?

The [TBST-011-01L](#) is a great idea.

Key features:

- Set consists of: 1-Lg tables, and 2-Sm nesting tables w/shelf
- Birch/maple plywood & solid maple construction
- Nylon glide
- Protective leg caps
- Fixed base shelf on side tables
- Optional bumper available



[TBST-011-01L](#)

TABLES - NESTING



TABLES - NESTING TABLES

Looking for a flexible merchandising solution for packaged baked goods?

The [TBST-012-01J](#) is a great option.

Key features:

- Set consists of: 2-Lg tables, 2-Sm nesting tables w/shelf, 2-bench tables w/ shelf and 1-riser
- Birch/maple plywood & solid maple construction
- Nylon glide
- Protective leg caps
- Fixed base shelf on side tables
- Optional bumper available



[TBST-012-01J](#)

TABLES - TIERED



TABLES - TIERED MERCHANDISING TABLE

Looking for a flexible, high impact solution for displaying various dry products?

The [Tiered Merchandising Table](#) is a great solution.

Key features:

- Birch/maple plywood & solid maple construction
- Locking casters
- Corner guards & ABS bumper
- Protective leg caps
- Optional bumper available
- Two sizes available:
 - 30" x 30"
 - 47 ½" x 30"



[Tiered Merchandising Table](#)



T: 800.839.5536 F: 905.772.3179

E: sales@cayugadisplays.com

A: 88 Talbot St E, PO Box 130
Cayuga, ON N0A 1E0