

# FOODBAR END MODULES - DOUBLE SIDED

Standard features shown



**\* FOOD PANS NOT INCLUDED**

## END MODULE WITH FOUR AIR OVER REFRIGERATED WELLS

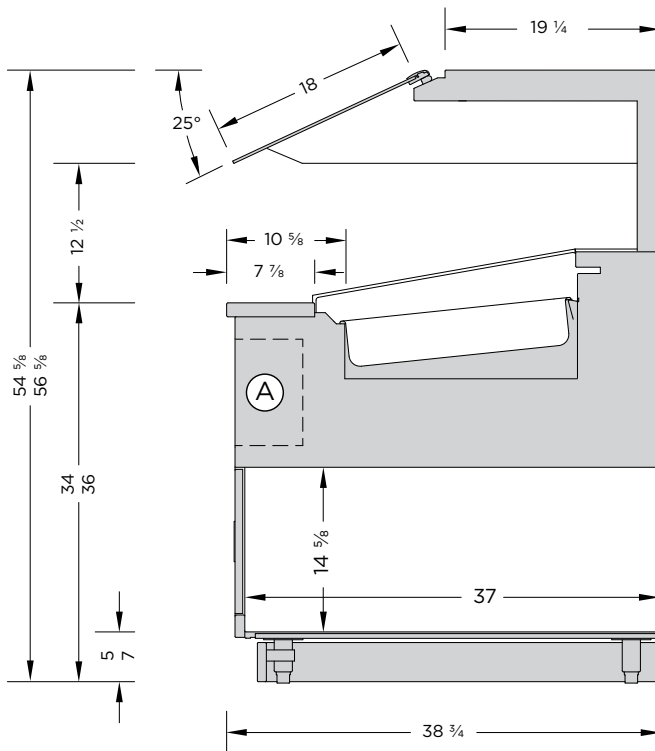
MODEL	DESCRIPTION	DEPTH	LENGTH
FBDEA-BAB	4 wells	38"	70 ½"

### FEATURES:

- All metal base construction.
- Cayuga Displays proprietary air-over refrigeration system designed to maximize product freshness and quality.
- LED Lighting strip mounted in the sneezeguard canopy.
- Food pans can be displayed in a flat or slightly angled position.
- Base cabinet with storage and front swing doors (access to cold well controls).
- Tempered lift-up sneezeguard glass meets ADA and NSF-7 standards.
- Brushed stainless steel refrigerated tub, sneezeguard canopy and top shelf cap.
- Many exterior paint or laminate finishes available.
- A variety of countertop materials and finishes.
- Equipped with remote refrigeration. Self-contained refrigeration available.
- Super E-Coat is applied to the evaporator coils to prevent corrosion from acids, oils and brines.
- Full electrical certification. All electrical components ETL/UL certified.
- 1 year parts and labor warranty.

Note: Information and specifications may change due to engineering improvements.

Custom features shown



FBDEA-BAB

Lift-up Sneezeguard Glass  
(Meets ADA and NSF-7 standards)

**A** Optional open base merchandising (5 1/8"D x 9 1/2"H, length varies based on unit) is located under 7 7/8" counter ledge.

# FOODBAR END MODULES - DOUBLE SIDED

## STANDARD DEPTH END MODULE

Standard features shown



Custom features shown



## END MODULE WITH DROP DOWN AREA-SHALLOW OR STANDARD DEPTH

MODEL	DESCRIPTION	DEPTH	LENGTH
FBDED-S-AAA	Drop down end for merchandising or container storage	14	70 1/2"
FBDED-D-AAA		24	
FBDED-S-BAB	Drop down end for merchandising or container storage and base storage	14	
FBDED-D-BAB		24	

### FEATURES:

- All metal base construction.
- A drop-down area (Standard unit - 52 1/4"L x 20 3/4"D x 10"H, Shallow unit - 52 1/4"L x 9 1/4"D x 10"H) for merchandising or container storage.
- Base cabinet without or with storage and front swing doors (two swing doors).
- 6" round or square drop-in condiment holders can be added to the countertop.
- 8" high clear acrylic panel can be added to the front of the drop-down area.
- Many exterior paint or laminate finishes available.
- A variety of countertop materials and finishes.
- Full electrical certification. All electrical components ETL/UL certified.
- 1 year parts and labor warranty.

Note: Information and specifications may change due to engineering improvements.

## SHALLOW DEPTH END MODULE

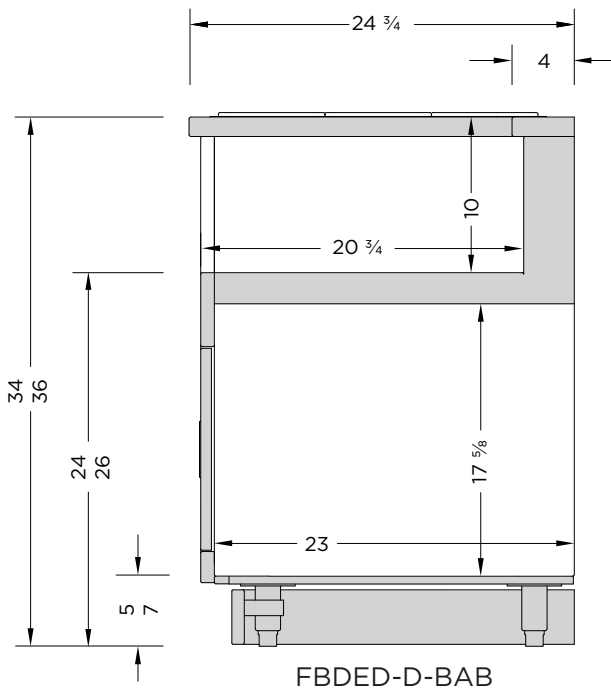
Standard features shown



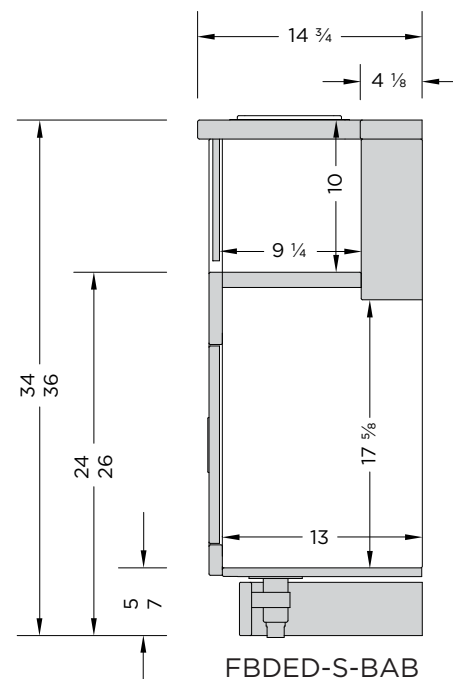
Custom features shown



## STANDARD DEPTH END MODULE



## SHALLOW DEPTH END MODULE



# FOODBAR END MODULES - DOUBLE SIDED



Standard features shown

\* FOOD PANS NOT INCLUDED



Custom features shown

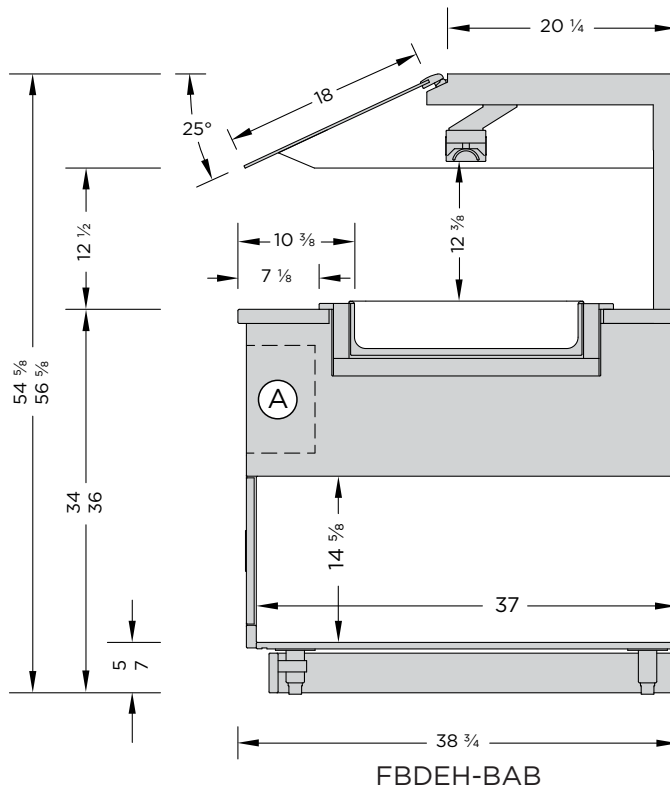
## END MODULE WITH THREE WATERLESS HEATED WELLS

MODEL	DESCRIPTION	DEPTH	LENGTH
FBDEH-BAB	3 wells	38"	70 ½"

### FEATURES:

- All metal base construction.
- Cayuga Displays proprietary waterless heat technology is designed to maintain the best holding temperatures to ensure product freshness and quality.
- Ceramic heat emitters are mounted in the sneezeguard canopy to provide additional radiant heat above each food pan.
- Heat resistance LED lighting strip mounted in the sneezeguard canopy.
- Base cabinet with storage and front swing doors (access to hot well controls).
- Tempered lift-up sneezeguard glass meets ADA and NSF-7 standards.
- Brushed stainless steel refrigerated tub, sneezeguard canopy and top shelf cap.
- Many exterior paint or laminate finishes available.
- A variety of countertop materials and finishes.
- Full electrical certification. All electrical components ETL/UL certified.
- 1 year parts and labor warranty.

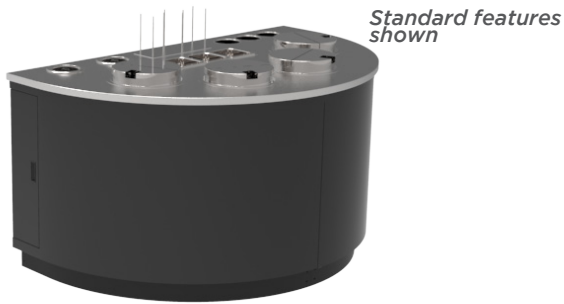
Note: Information and specifications may change due to engineering improvements.



Lift-up Sneezeguard Glass  
(Meets ADA and NSF-7 standards)

Ⓐ Optional open base merchandising (5 1/8"D x 9 1/2"H, length varies based on unit) is located under 7 7/8" counter ledge.

# FOODBAR END MODULES - DOUBLE SIDED



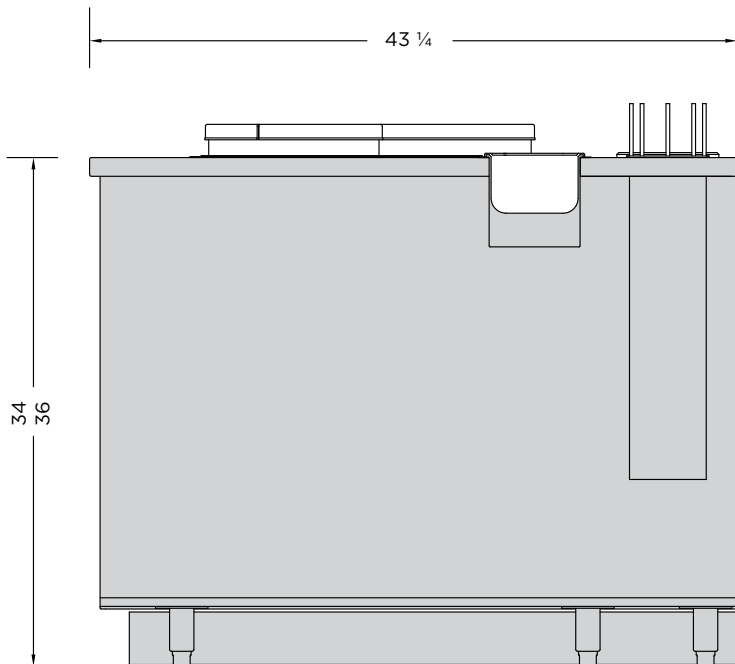
## END MODULE SEMI-CIRCLE CABINET WITH DROP-IN ROUND HEATED WELLS

MODEL	DESCRIPTION	QTY OF WELLS	DEPTH	LENGTH
FBDER-AAA	7 qt.	4 wells	42 ½"	70 ½"
FBDEA-BAB	11 qt.			

### FEATURES:

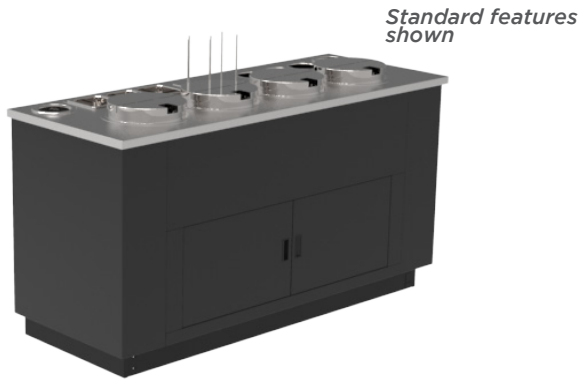
- All metal base construction.
- Equipped with four Hatco drop-in round heated wells designed to hold soups or a variety of other hot foods. Can be used for both wet or dry operation.
- Base cabinet with one small swing door to access heated well controls.
- Equipped with three 6" round and three 6" square drop-in condiment holders, two drop-in adjustable cup dispensers and one surface mount double rod lid holder.
- Two sneezeguard options available; fixed or lift-up glass can be added to the module. Lift-up glass meets ADA and NSF-7 standards.
- Brushed stainless steel well tub, sneezeguard canopy and top shelf cap.
- Many exterior paint or laminate finishes available.
- A variety of countertop materials and finishes.
- Full electrical certification. All electrical components ETL/UL certified.
- 1 year parts and labor warranty.

Note: Information and specifications may change due to engineering improvements.



FBDER-AAA OR FBDER-BAB

# FOODBAR END MODULES - DOUBLE SIDED



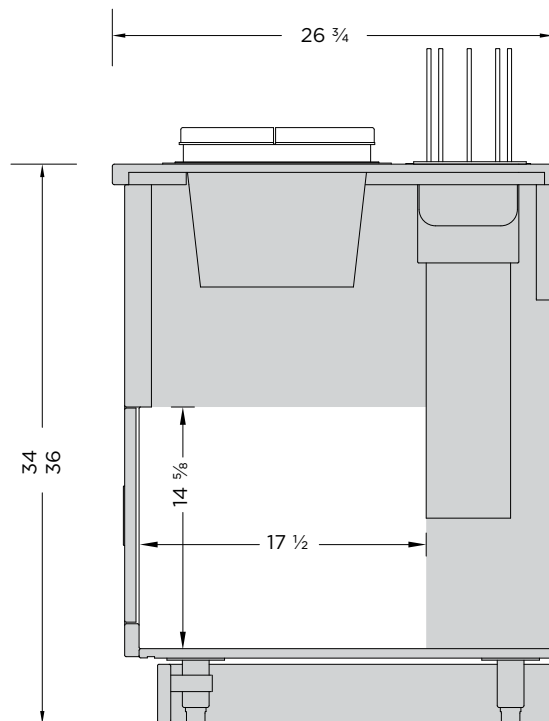
## END MODULE RECTANGULAR CABINET WITH DROP-IN ROUND HEATED WELLS

MODEL	DESCRIPTION	QTY OF WELLS	DEPTH	LENGTH
FBDES-AAA	7 qt.	4 wells	26 ¾"	70 ½"
FBDES-BAB	11 qt.			

### FEATURES:

- All metal base construction.
- Equipped with four Hatco drop-in round heated wells designed to hold soups or a variety of other hot foods. Can be used for both wet or dry operation.
- Base cabinet with storage and front swing doors (two swing doors and access to heated well controls).
- Equipped with three 6" round and three 6" square drop-in condiment holders, two drop-in adjustable cup dispensers and one surface mount single rod lid holder.
- Two sneezeguard options available; fixed or lift-up glass can be added to the module. Lift-up glass meets ADA and NSF-7 standards.
- Brushed stainless steel well tub, sneezeguard canopy and top shelf cap.
- Many exterior paint or laminate finishes available.
- A variety of countertop materials and finishes.
- Full electrical certification. All electrical components ETL/UL certified.
- 1 year parts and labor warranty.

Note: Information and specifications may change due to engineering improvements.



FBDES-AAA OR FBDES-BAB